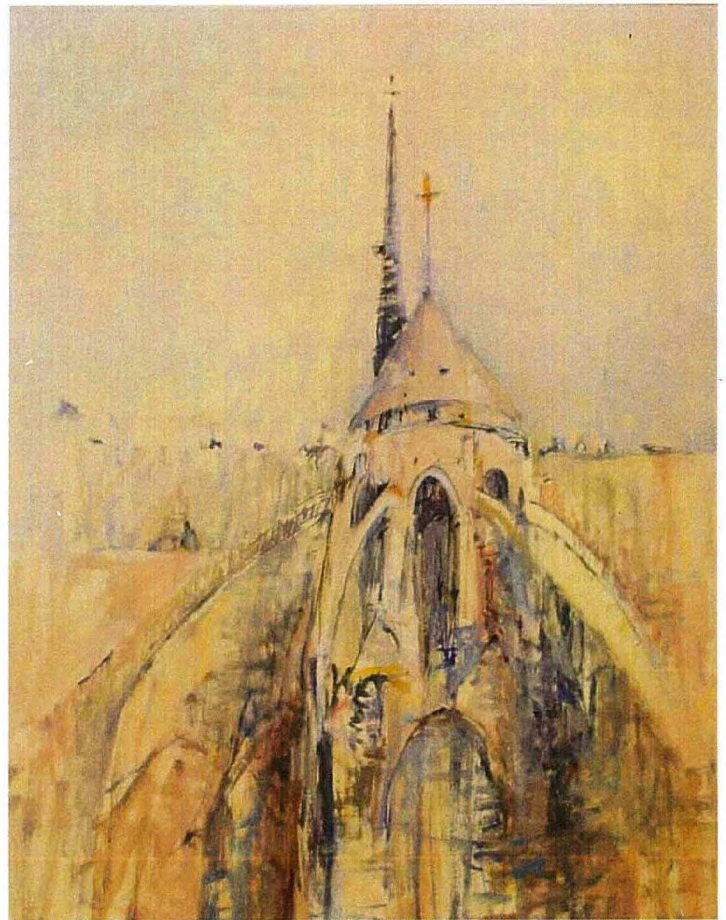
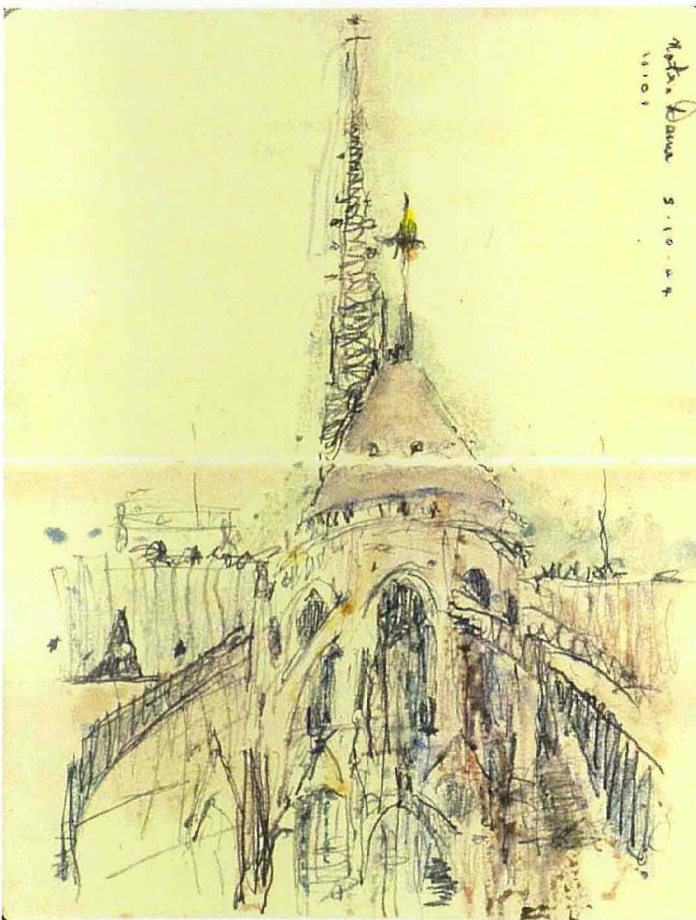


PERIPHERAL GLIMPSES

England and France



James Brown

Flinders Gallery, Townsville
October 2007

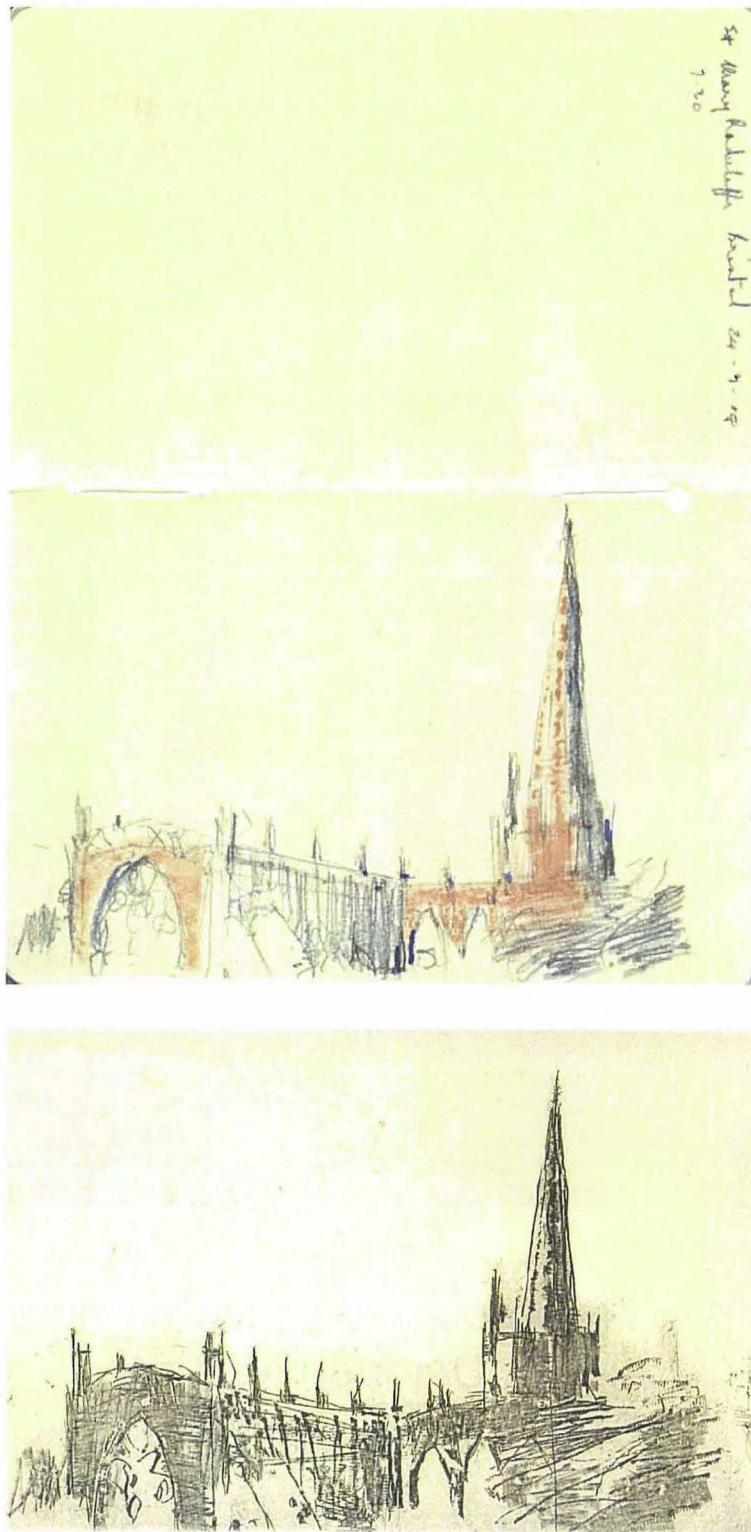
CURATED BY ANNE CARTER
AND SUPPORTED BY JAMES COOK UNIVERSITY

An exhibition of paintings, drawings and etchings of
England and France developed from
sketchbook pages drawn on location
by James Brown

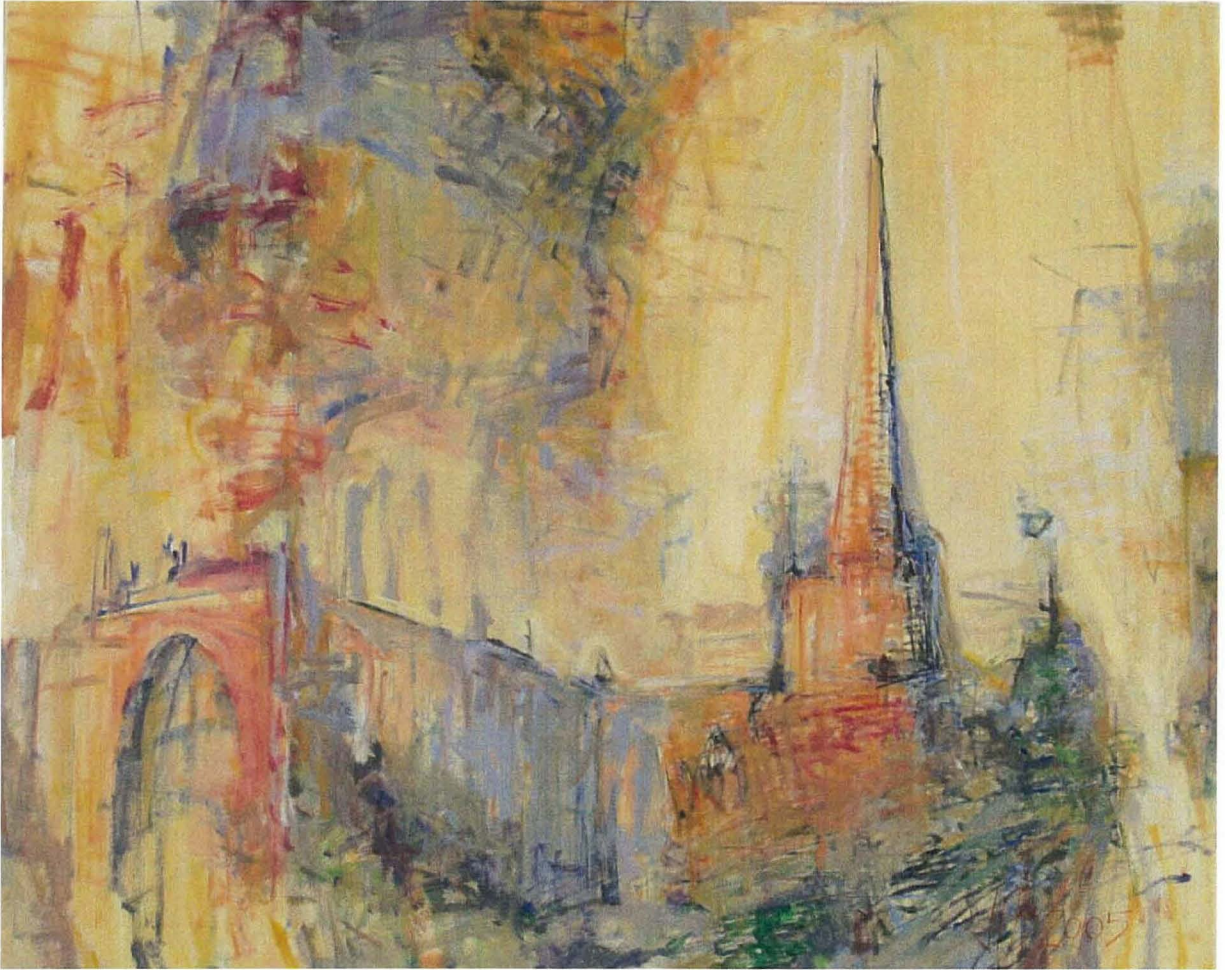


Flinders Gallery, Townsville
October 2007

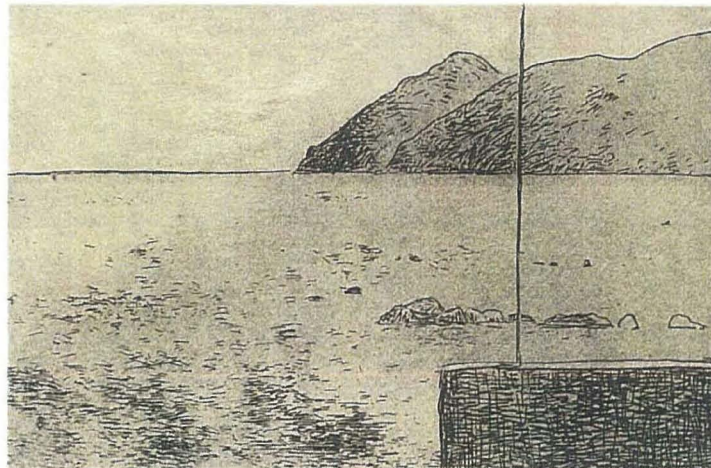
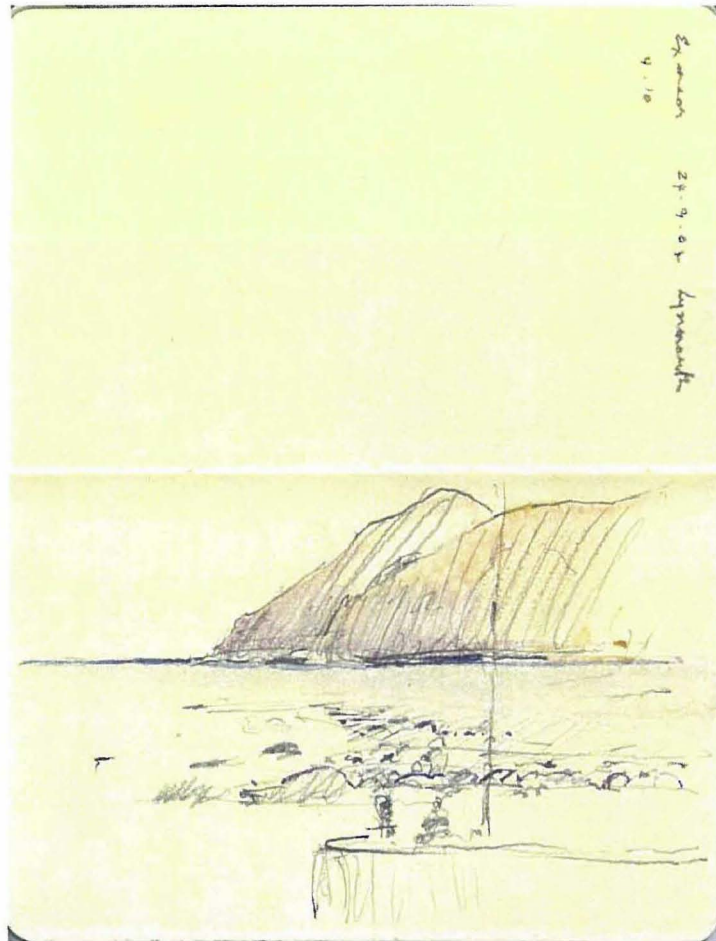
CURATED BY ANNE CARTER
AND SUPPORTED BY JAMES COOK UNIVERSITY



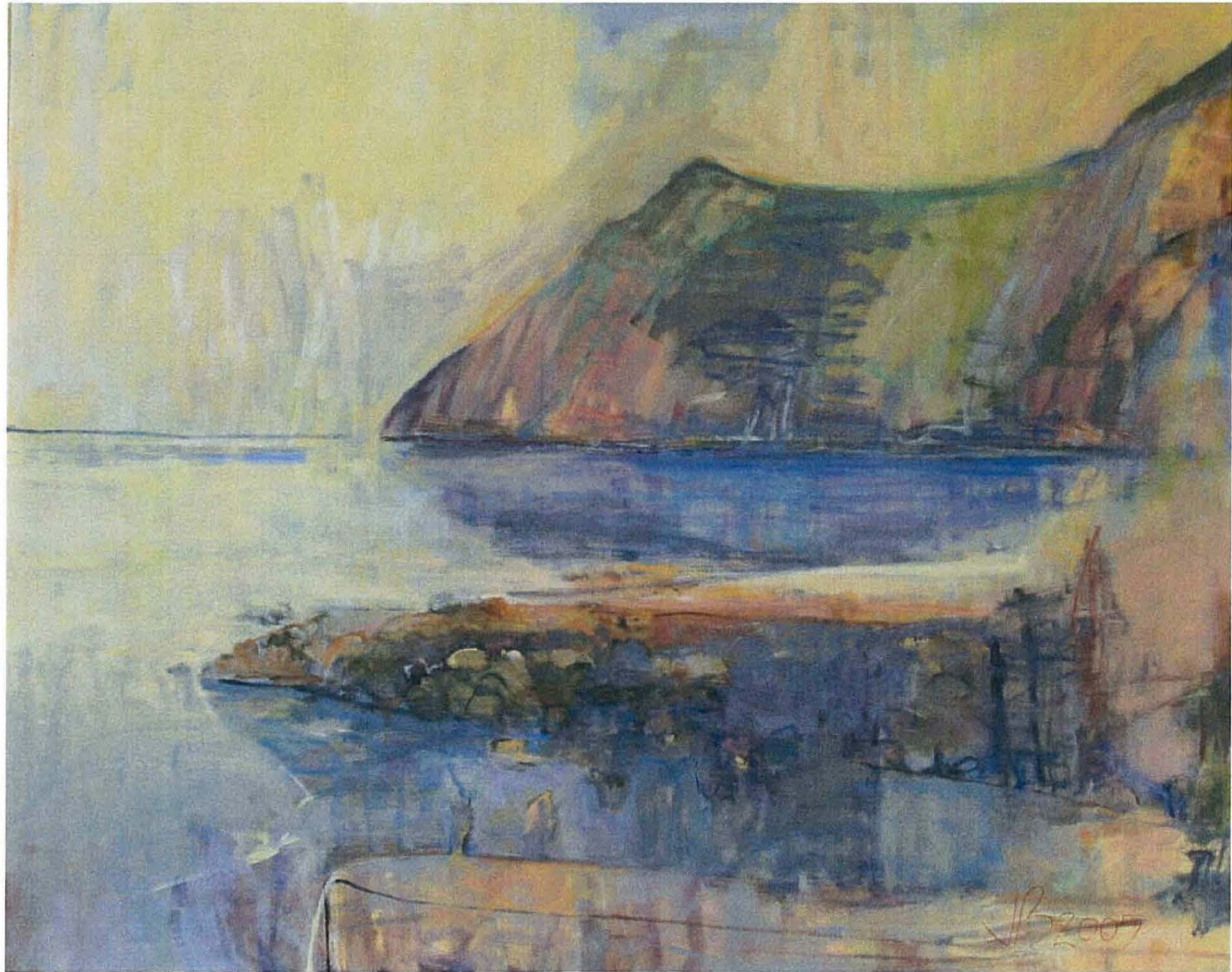
(above) *St Mary Recliffe, Bristol*, 2004, pencil and watercolour on sketchbook page, (each page) 9 x 14 cm
(below) *St Mary Recliffe, Bristol*, 2007, etching, 18.8 x 29.8 cm



St Mary Redcliffe, Bristol, 2005. 80 x 100 cm, oil on canvas



(above) *Exmoor, Lynmouth*, 2004, pencil with watercolour on sketchbook page, (each page) 9 x 14 cm
(below) *Exmoor, Lynmouth*, 2007, etching, 19.8 x 29.8 cm



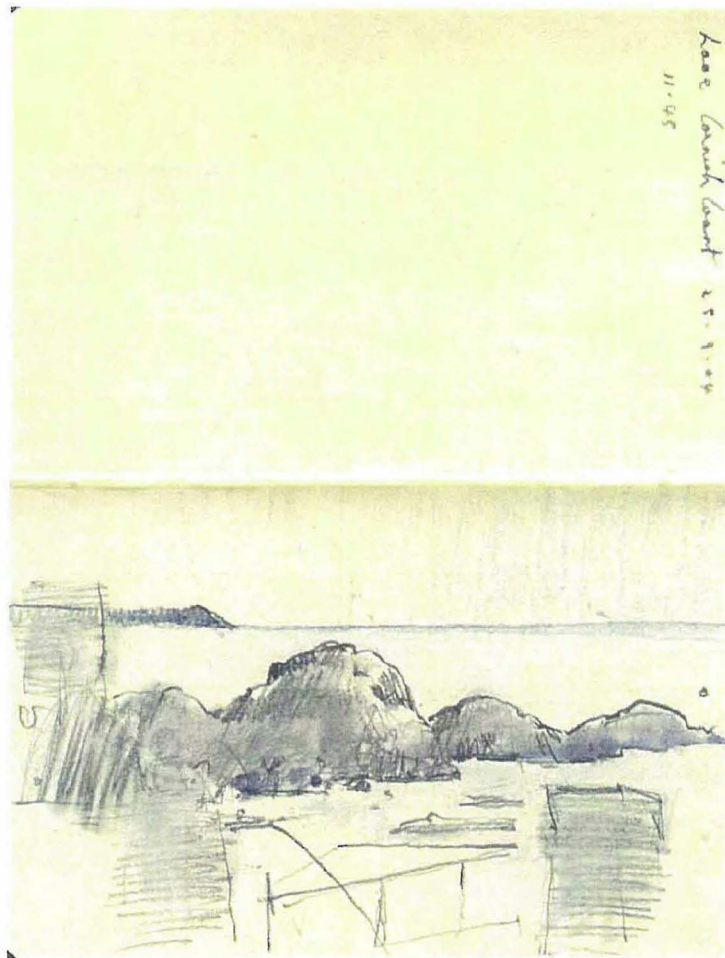
Exmoor, Lynmouth, 2005. 80 x 100 cm, oil on canvas



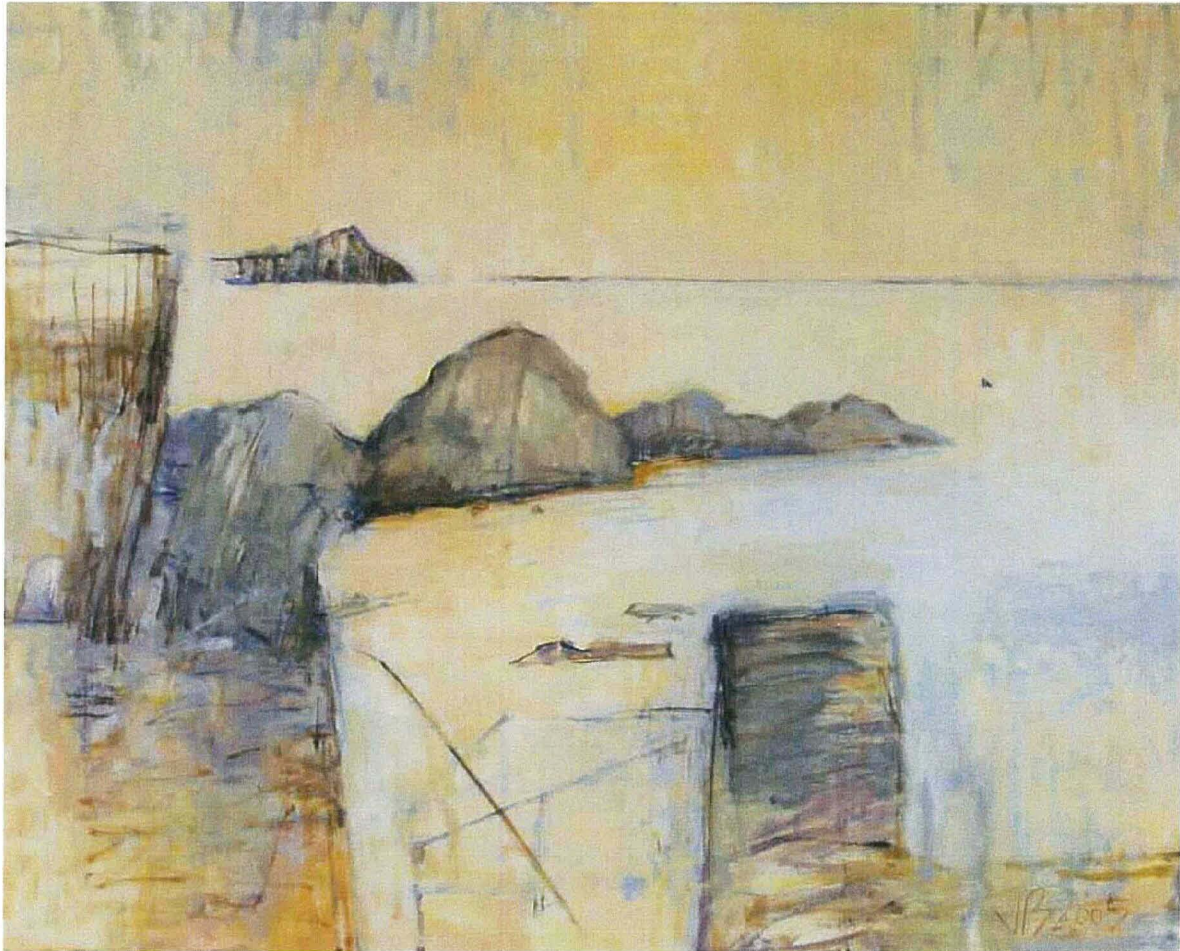
(above) *Barnstaple*, 2004, pencil with watercolour on sketchbook pages, (each page) 9 x 14 cm
(below) *Barnstaple*, 2007, etching, 19.8 x 29.8 cm



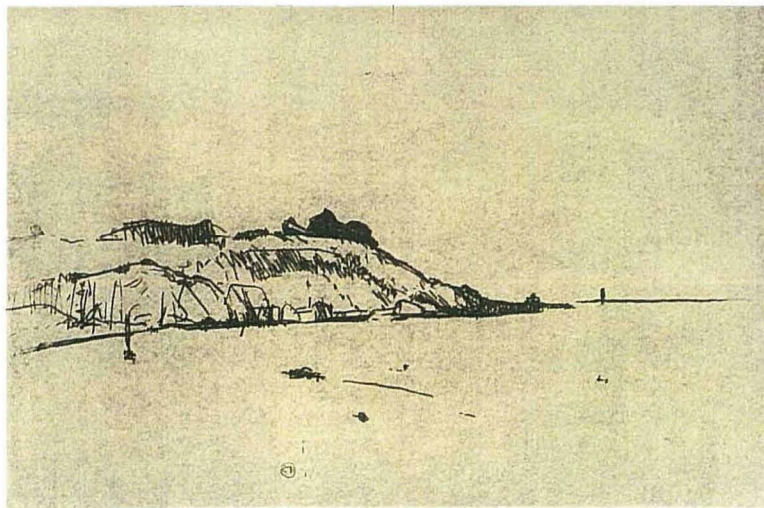
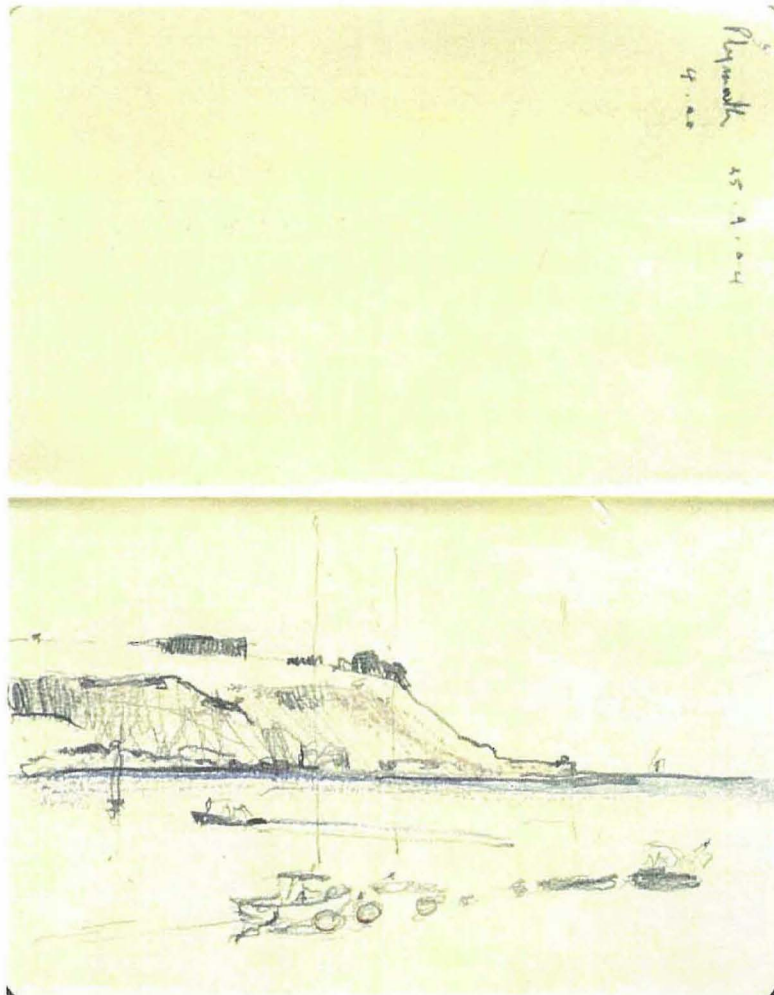
Barnstable, 2005, 80 x 100 cm, oil on canvas



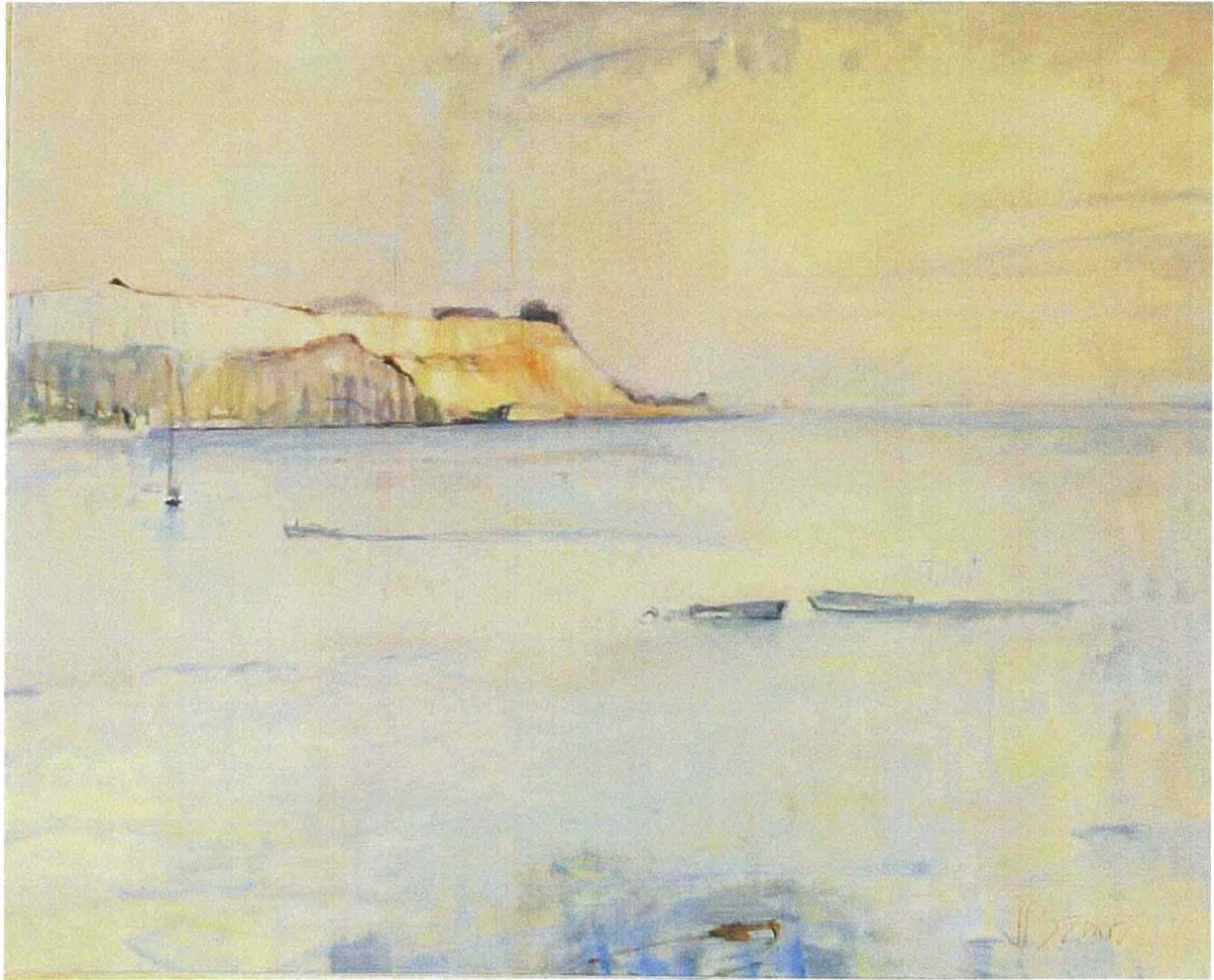
(above) Loos, *Cornish Coast*, 2004, pencil with watercolour on sketchbook pages, (each page) 9 x 14 cm
(below) Loos, *Cornish Coast*, 2007, etching, 18.8 x 29.8 cm



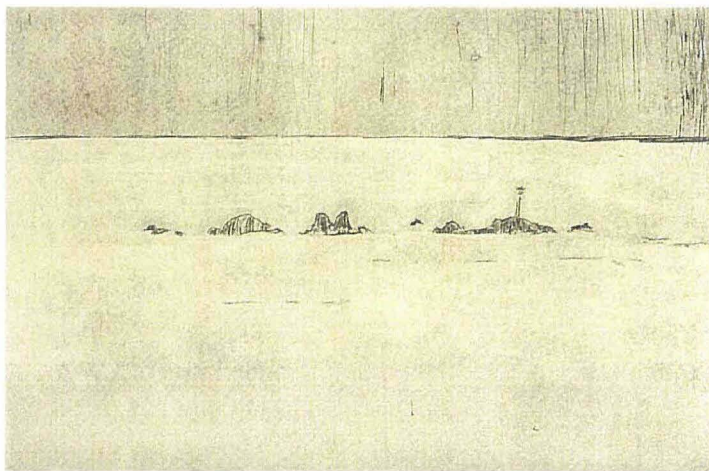
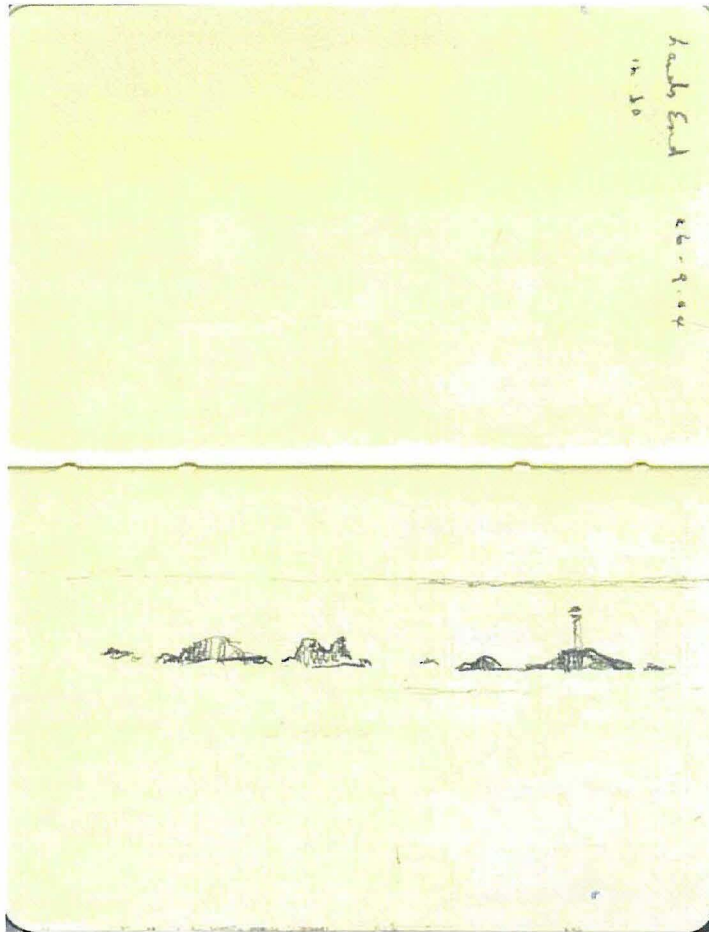
Loos, Cornish Coast, 2005, 80 x 100 cm, oil on canvas



(above) *Plymouth*, 2004, pencil with watercolour on sketchbook pages, (each page) 9 x 14 cm
(below) *Plymouth*, 2007, etching, 18.8 x 29.8 cm



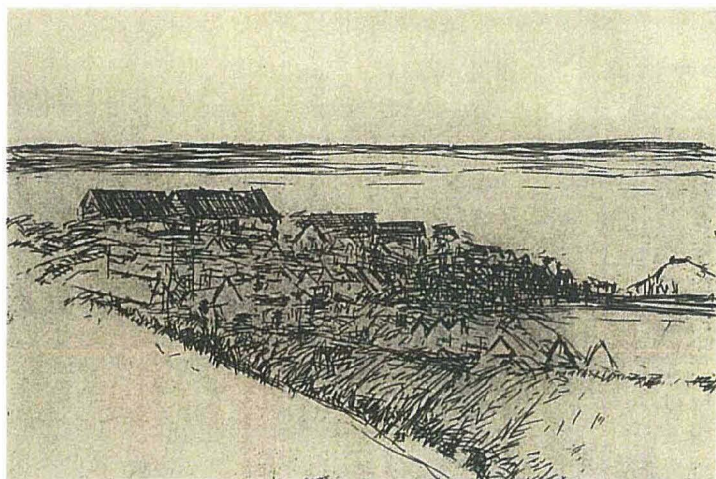
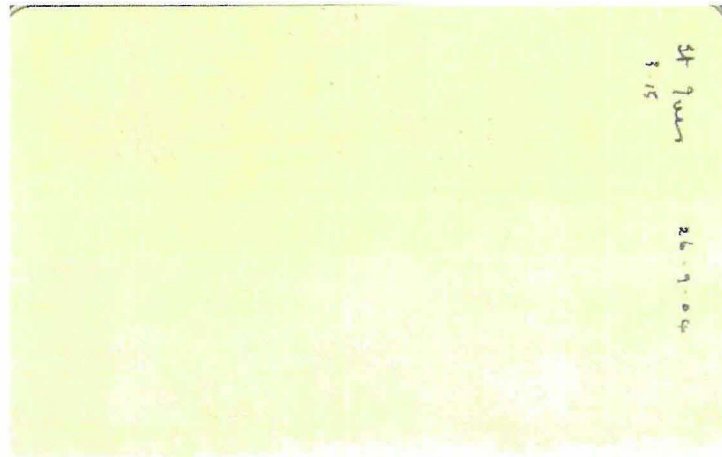
Plymouth, 2005, 80 x 100 cm, oil on canvas



(above) *Lands End*, 2004, pencil on sketchbook page, (each page) 9 x 14 cm
(below) *Lands End*, 2007, etching, 18.8 x 29.8 cm



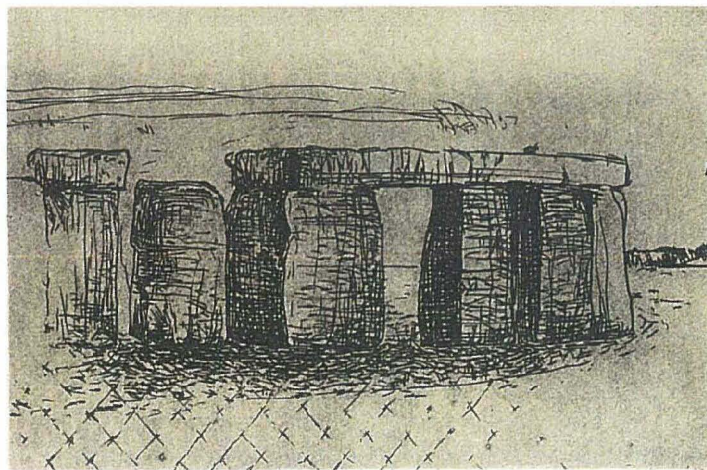
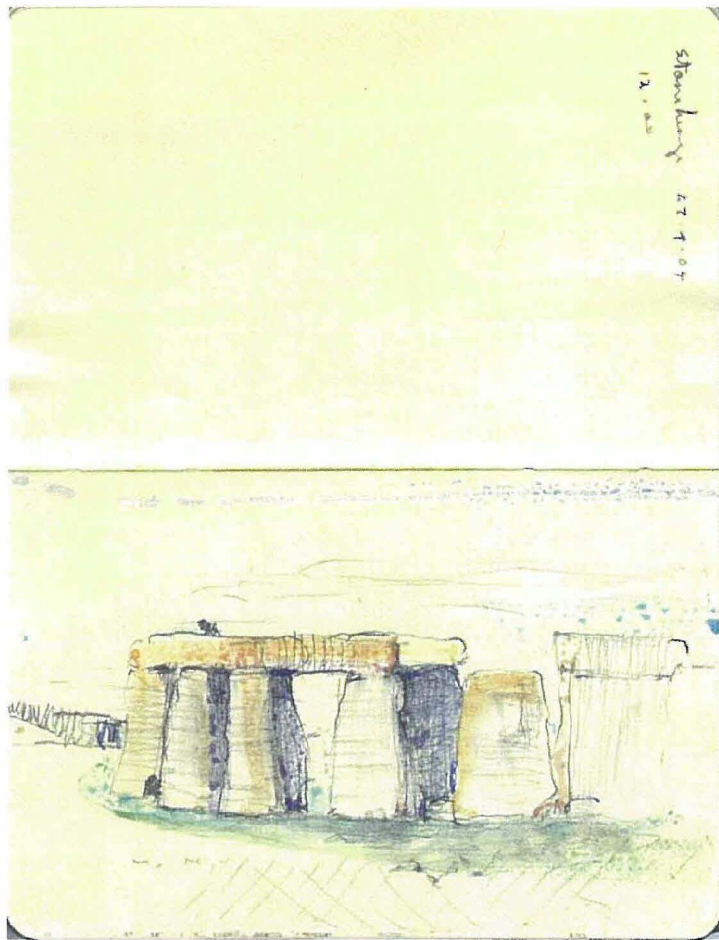
Lands End, 2005, 80 x 100 cm, oil on canvas



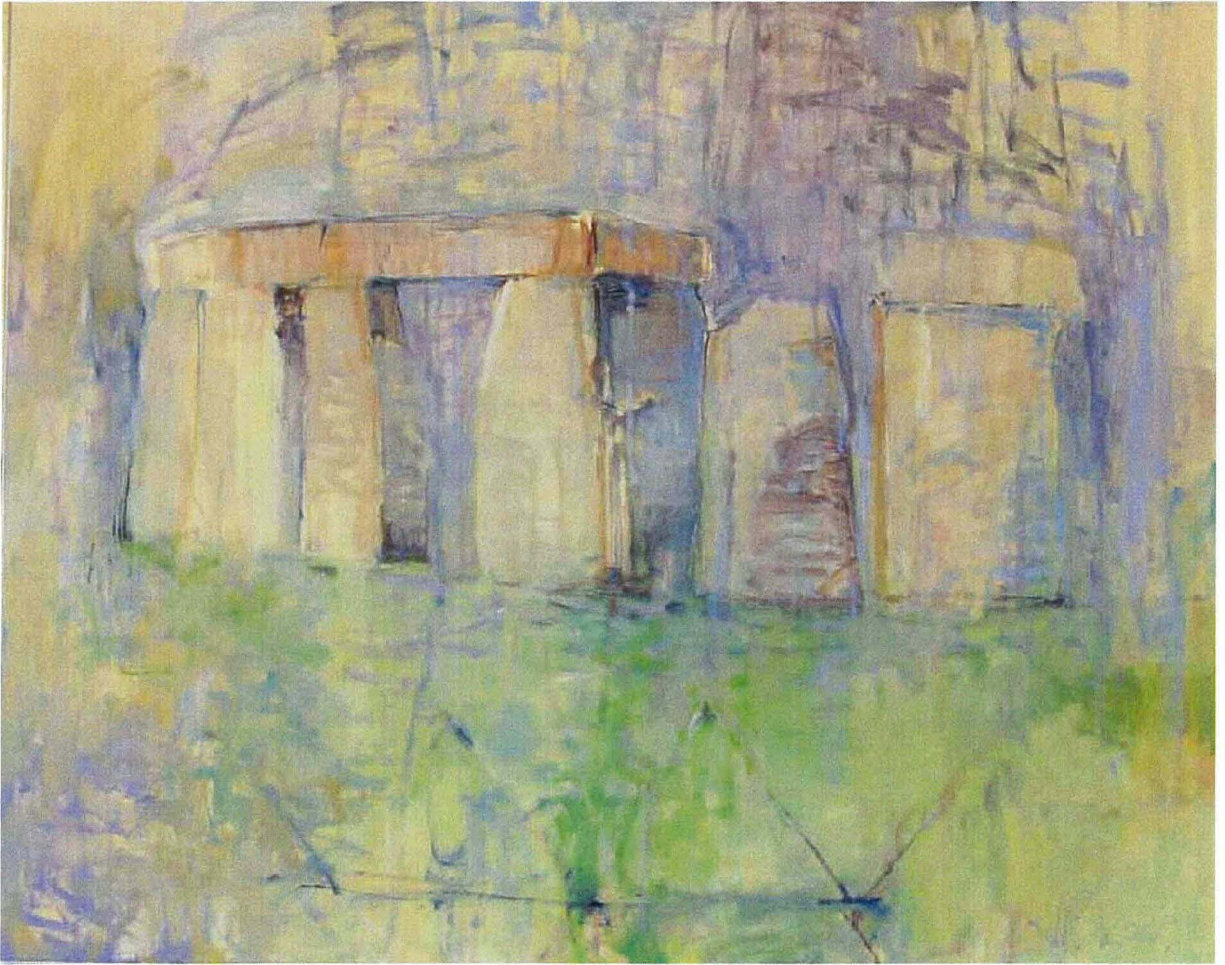
(above) *St Ives*, 2004, pencil with watercolour on sketchbook page, (each page) 9 x 14 cm
(below), *St Ives*, 2007. etching, 19.8 x 29.8 cm



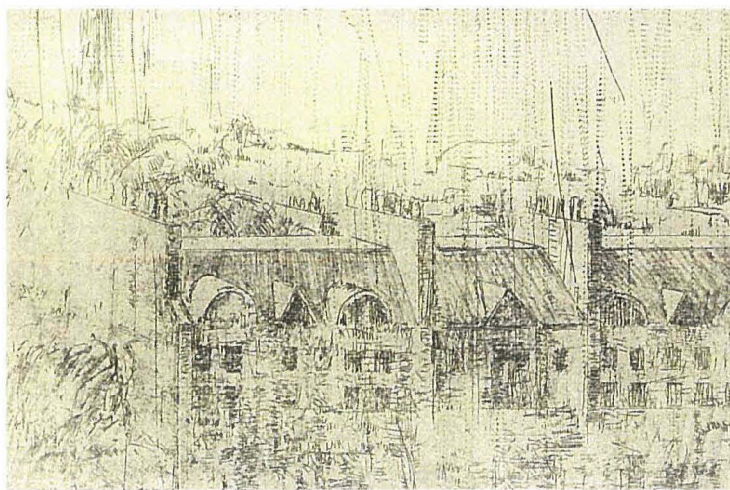
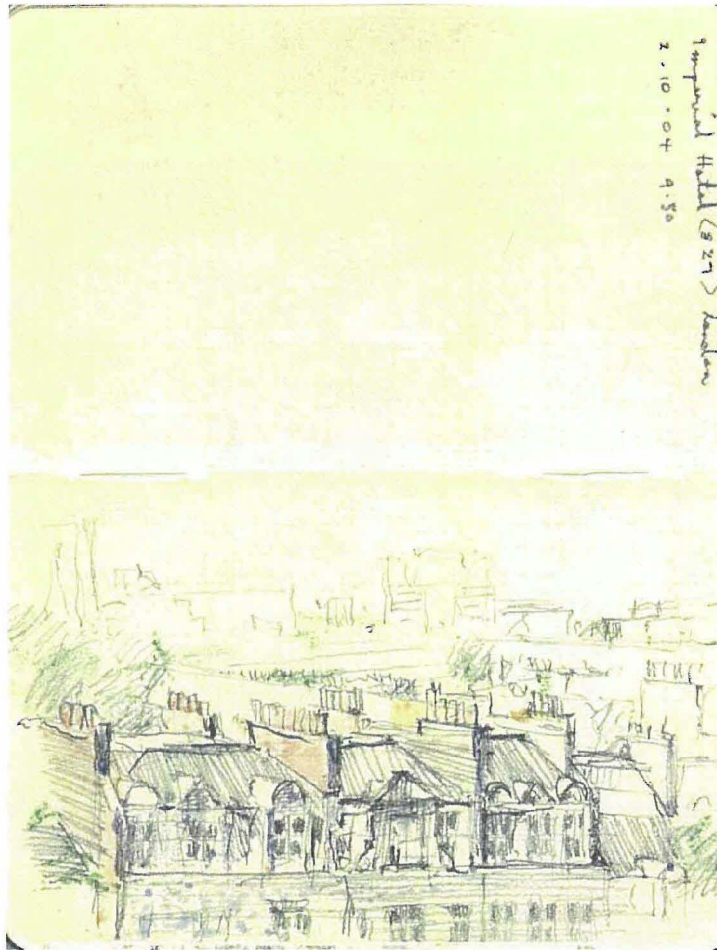
St Ives, 2005, 80 x 100 cm, oil on canvas



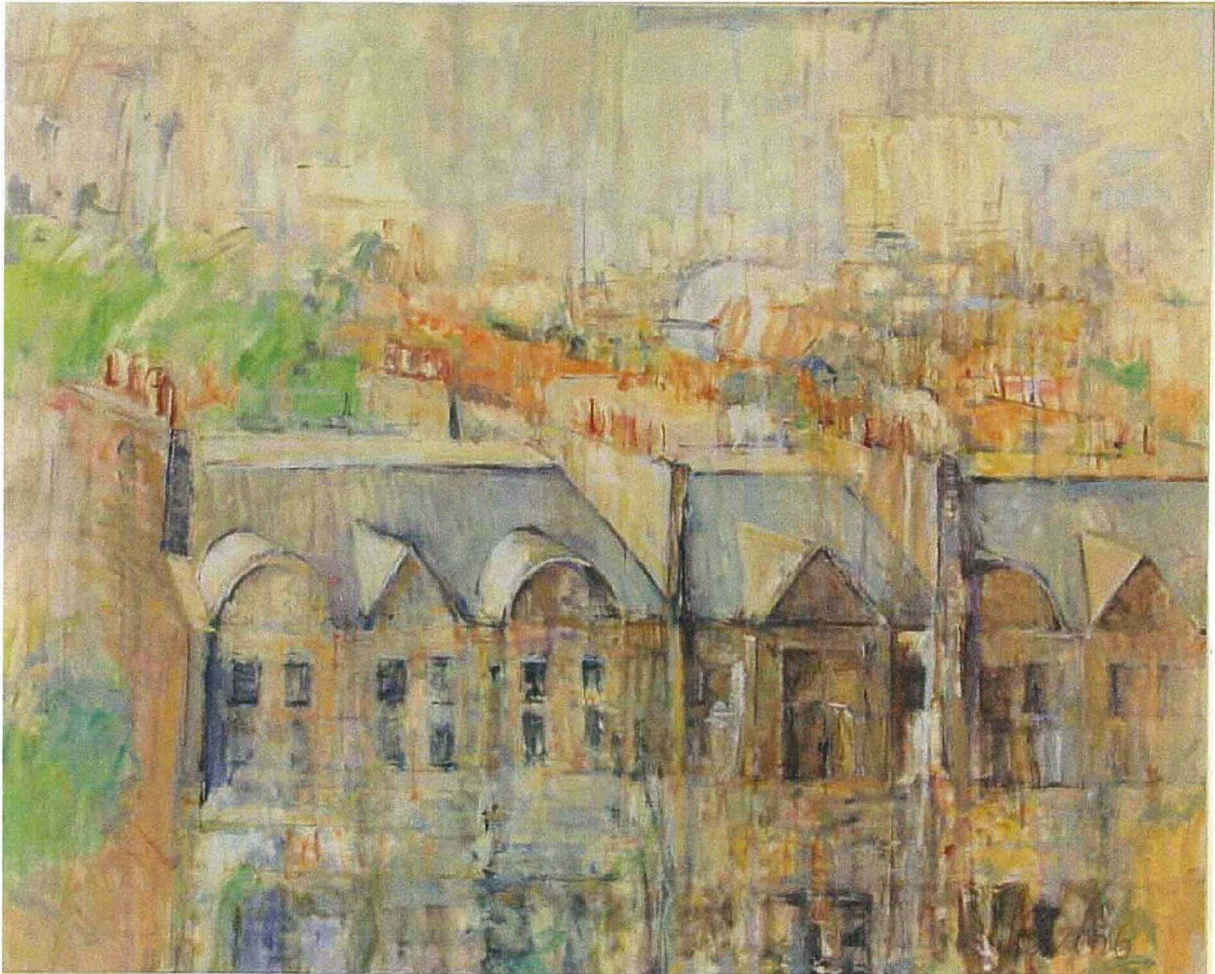
(above) *Stonehenge*, 2004. pencil with watercolour on sketchbook page, (each page) 9 x 14 cm
(below) *Stonehenge*, 2007. etching, 19.8 x 29.8 cm



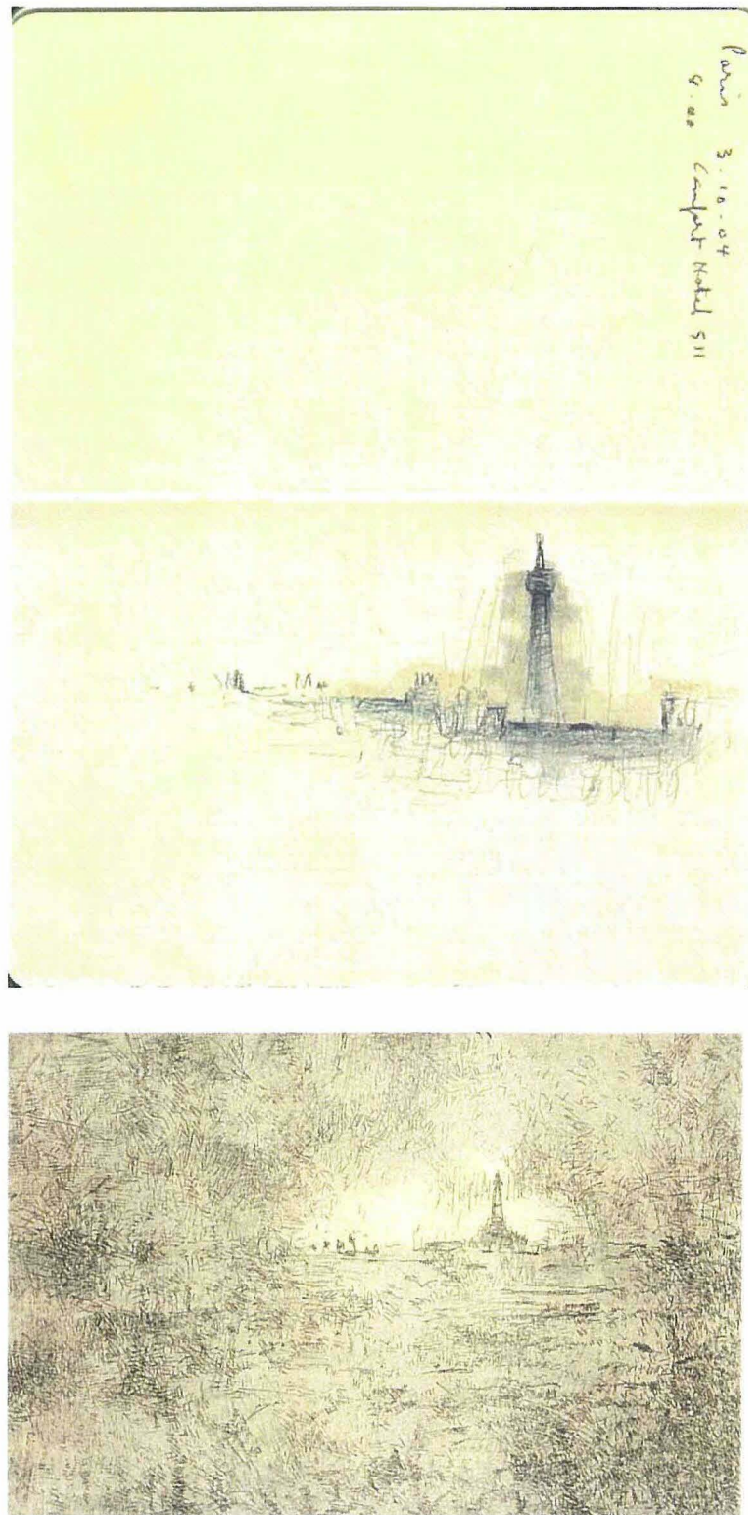
Stonehenge, 2005, 80 x 100 cm, oil on canvas



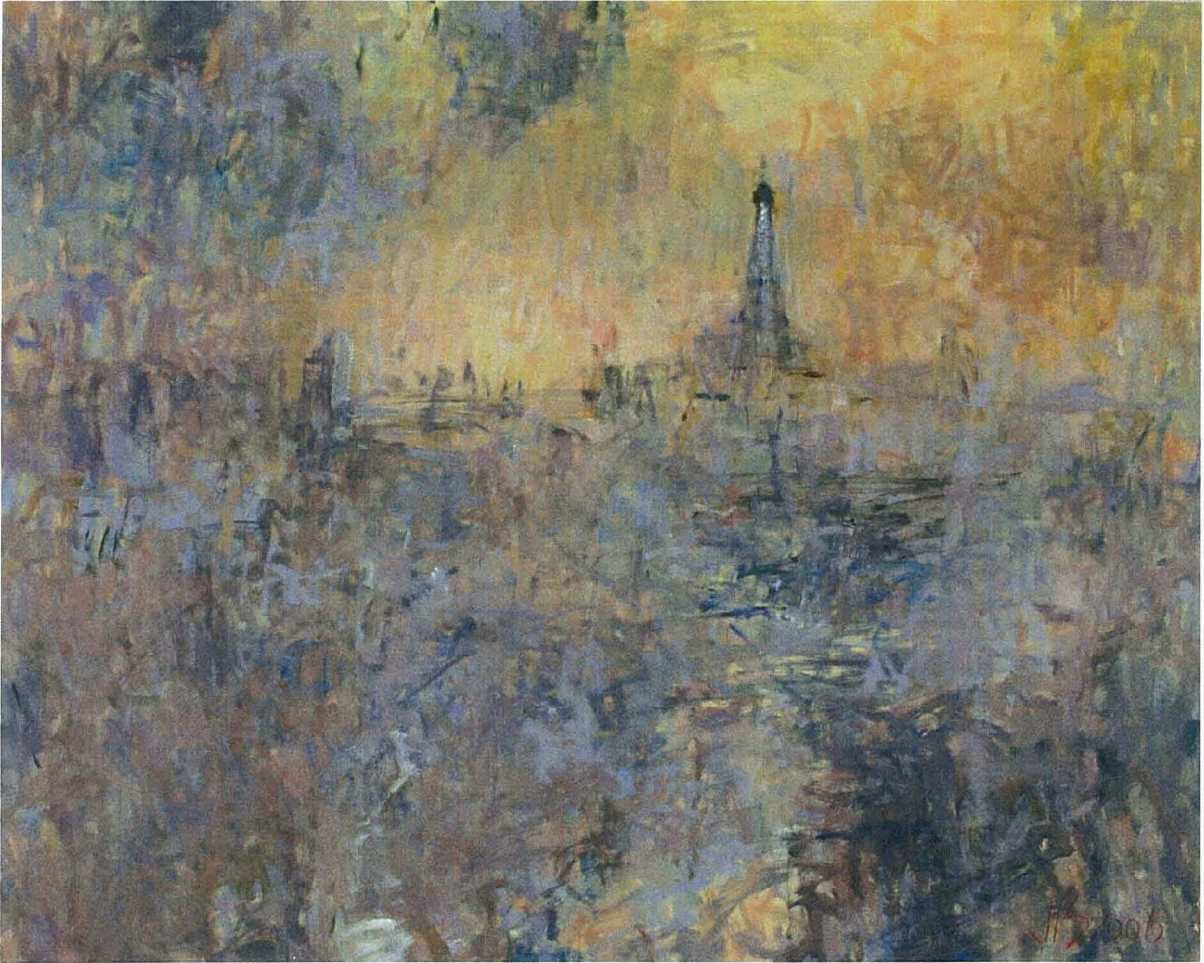
(above) *From the Imperial Hotel*, 2004, pencil with watercolour on sketchbook page, (each page) 9 x 14 cm
(below) *From the Imperial Hotel*, 2007, etching, 18.8 x 29.8 cm



From the Imperial Hotel, 2006, 80 x 100 cm, oil on canvas



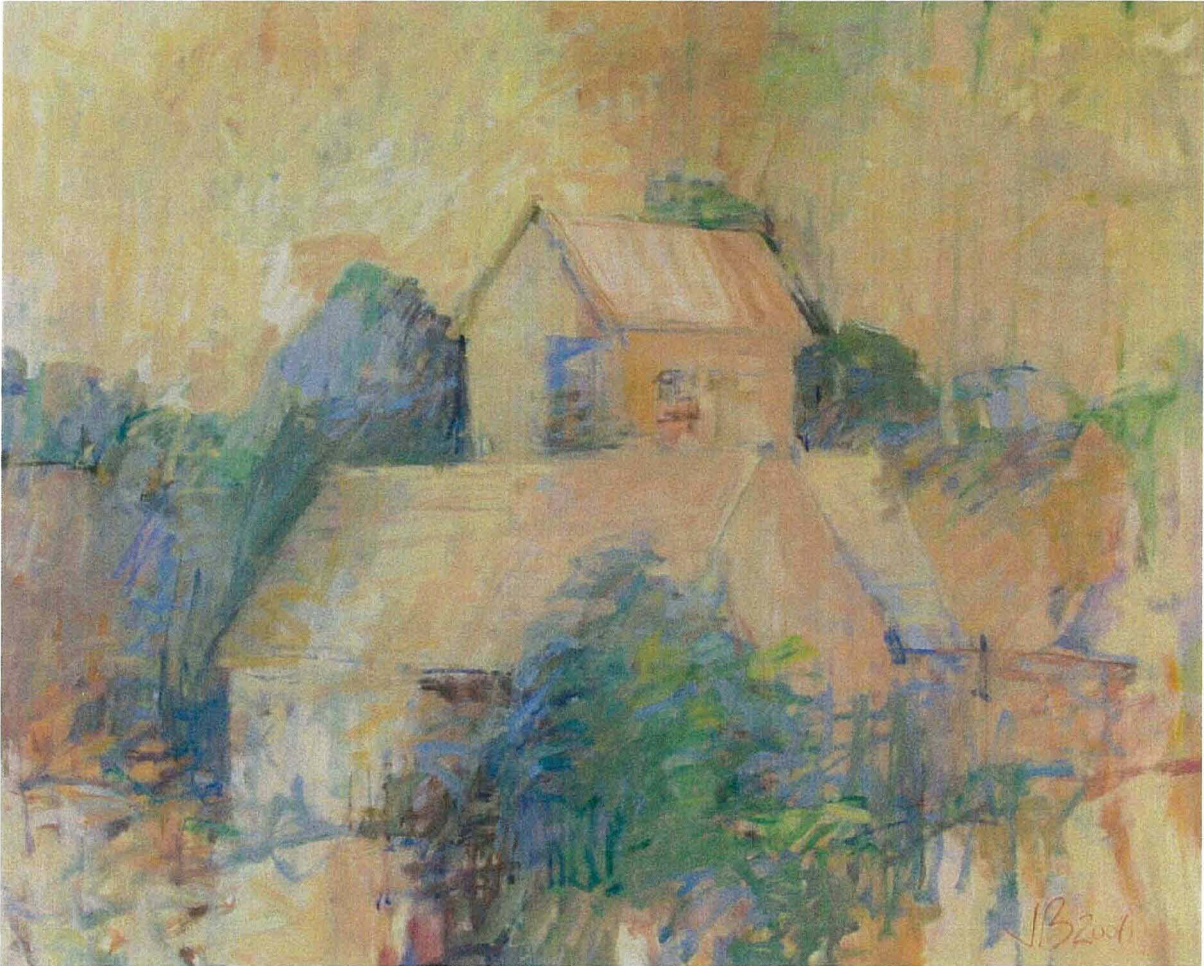
(above) 8.00pm *Comfort Hotel*, 2004, pencil with watercolour on sketchbook page. (each page) 9 x 14 cm
(below) 8.00pm *Comfort Hotel*, 2007, etching, 18.8 x 29.8 cm



8.00pm Comfort Hotel, 2006, 80 x 100 cm, oil on canvas



(above) *Giverny*, 2004, pencil with watercolour on sketchbook page. (each page) 9 x 14 cm
(below) *Giverny*, 2007, etching. 18.8 x 29.8 cm



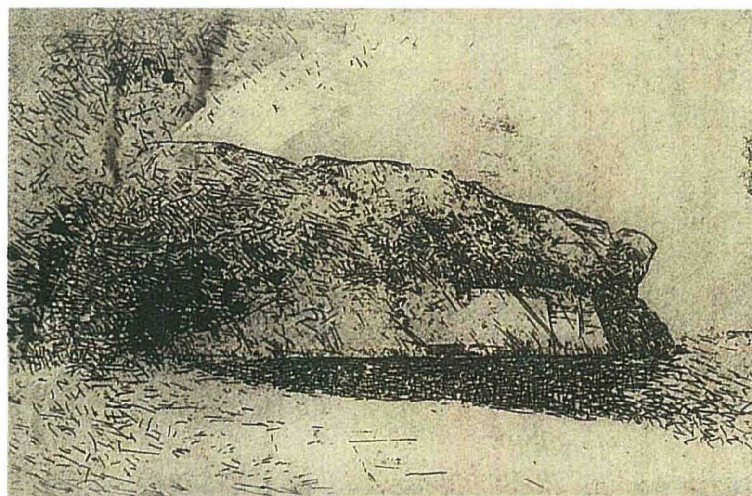
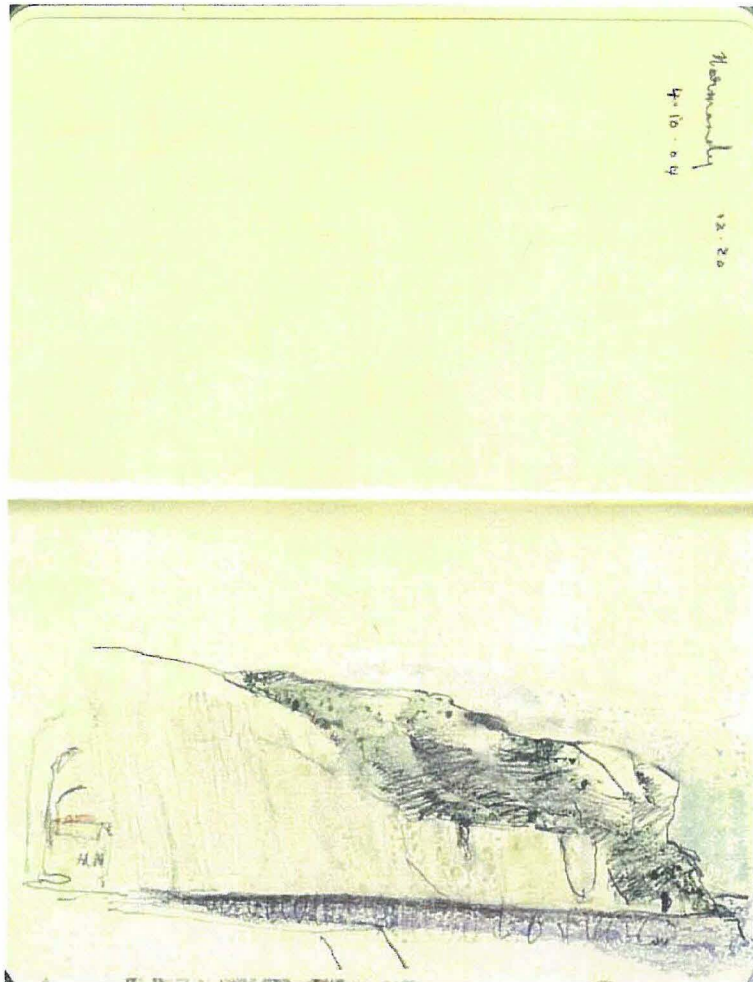
Giverny, 2006, 80 x 100 cm, oil on canvas



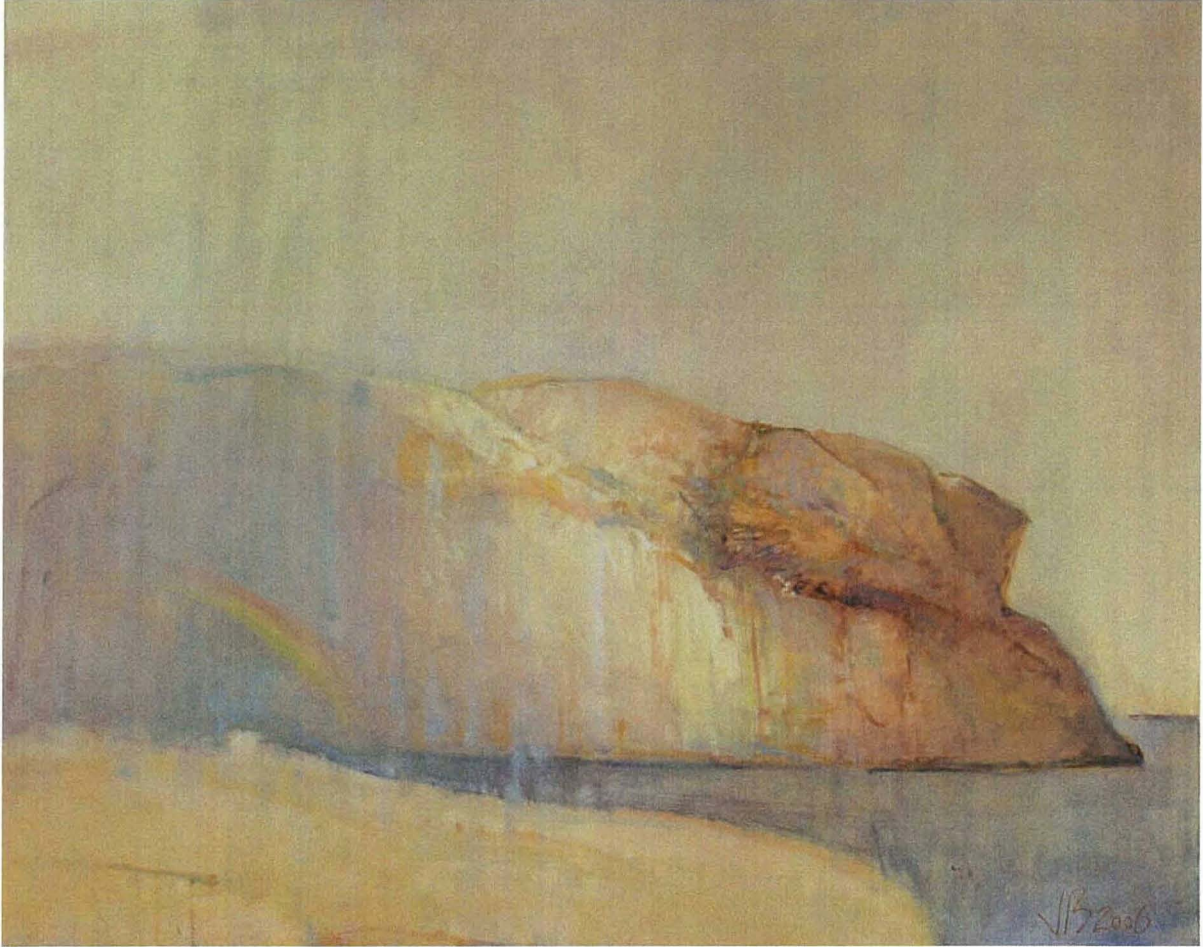
(left) *Rouen Cathedral*, 2004, pencil with watercolour on sketchbook pages, (each page) 9 x 14 cm
(right) *Rouen Cathedral*, 2007, etching, 18.8 x 29.8 cm



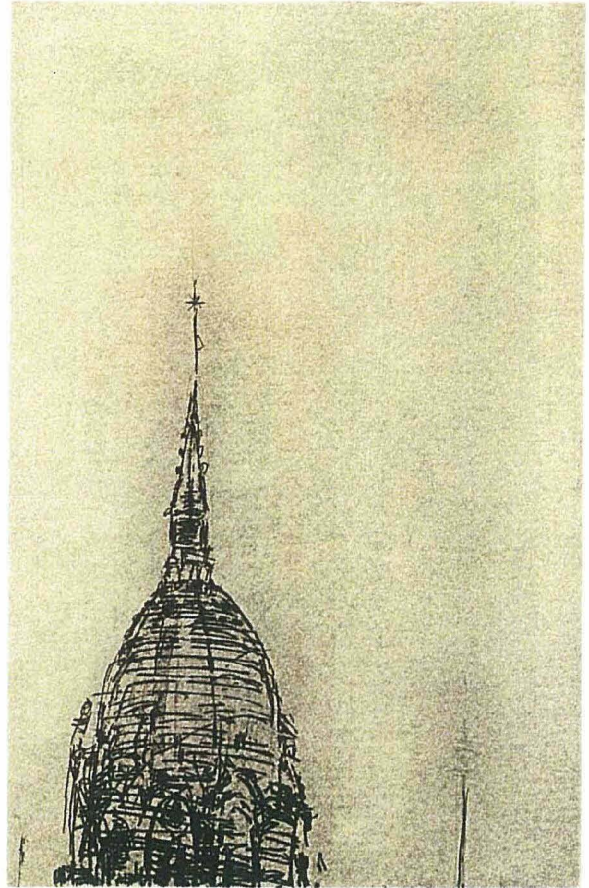
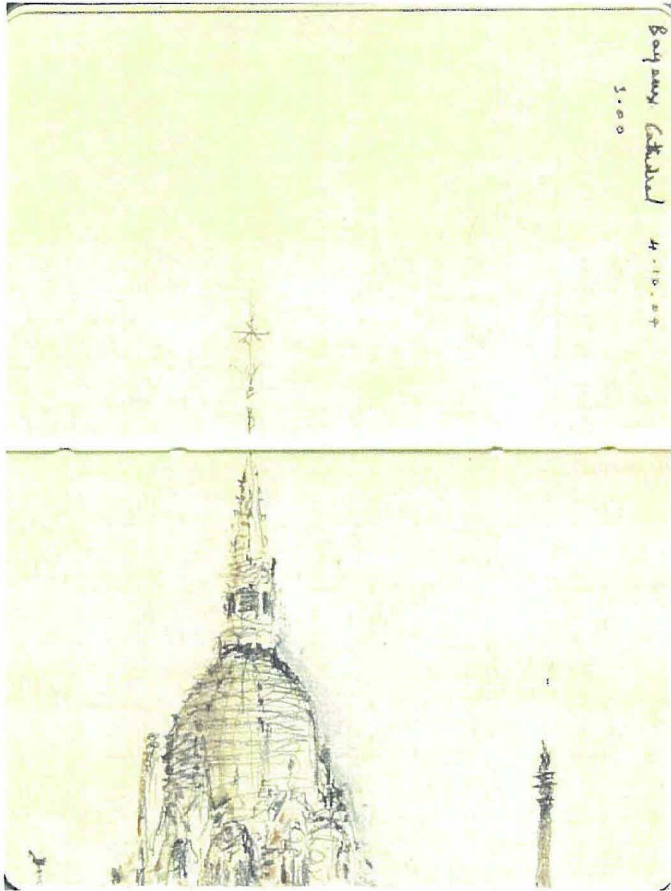
Rouen Cathedral, 2006, 80 x 100 cm, oil on canvas



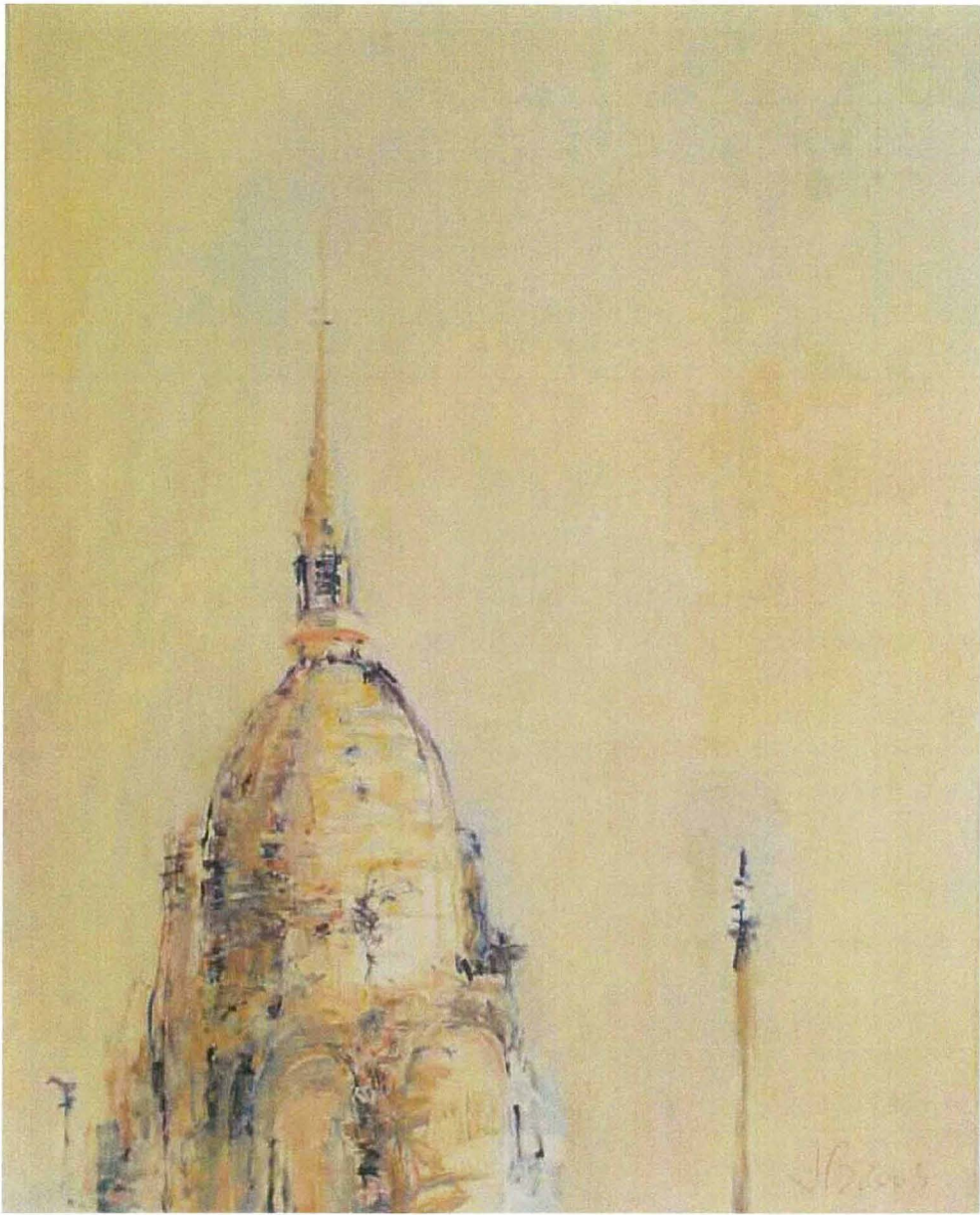
(above) *Normandy*, 2004, pencil with watercolour on sketchbook page, (each page) 9 x 14 cm
(below) *Normandy*, 2007, etching, 18.8 x 29.8 cm



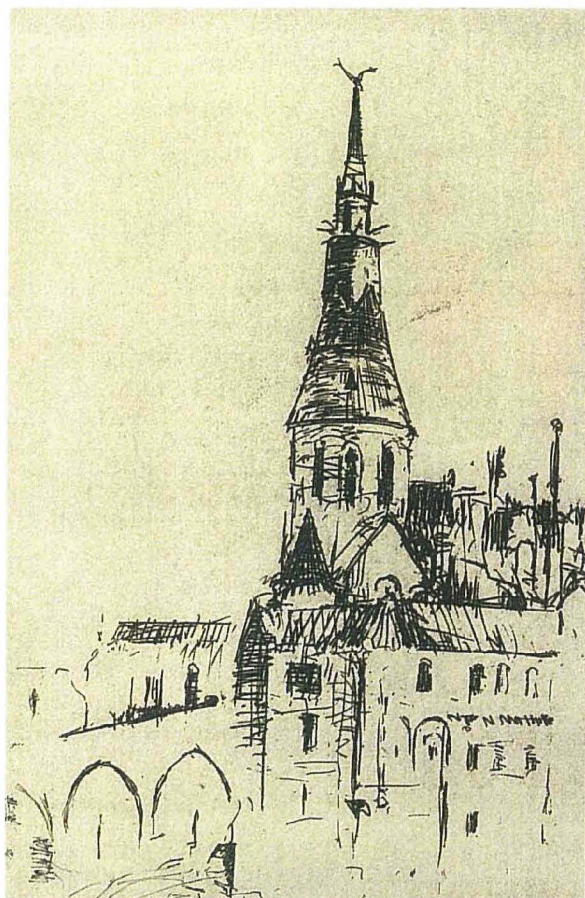
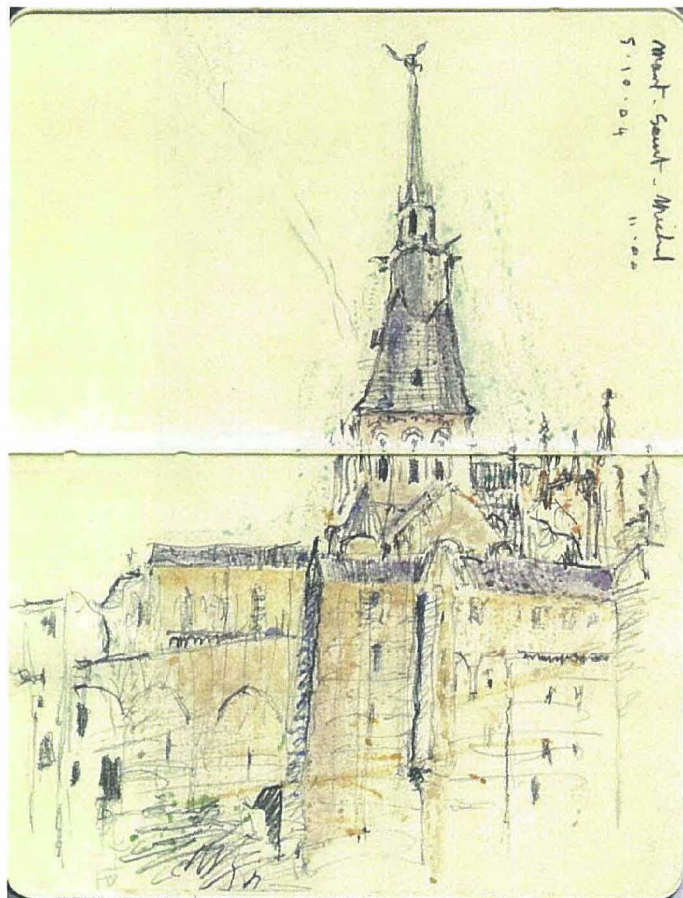
Normandy, 2006, 80 x 100 cm, oil on canvas



(left) *Bayeux Cathedral*, 2004, pencil with watercolour on sketchbook page, (each page) 9 x 14 cm
(right) *Bayeux Cathedral*, 2007, etching, 18.8 x 29.8 cm



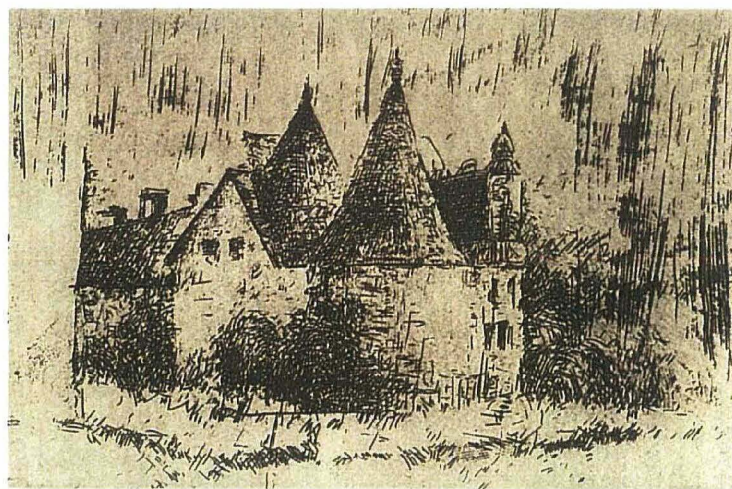
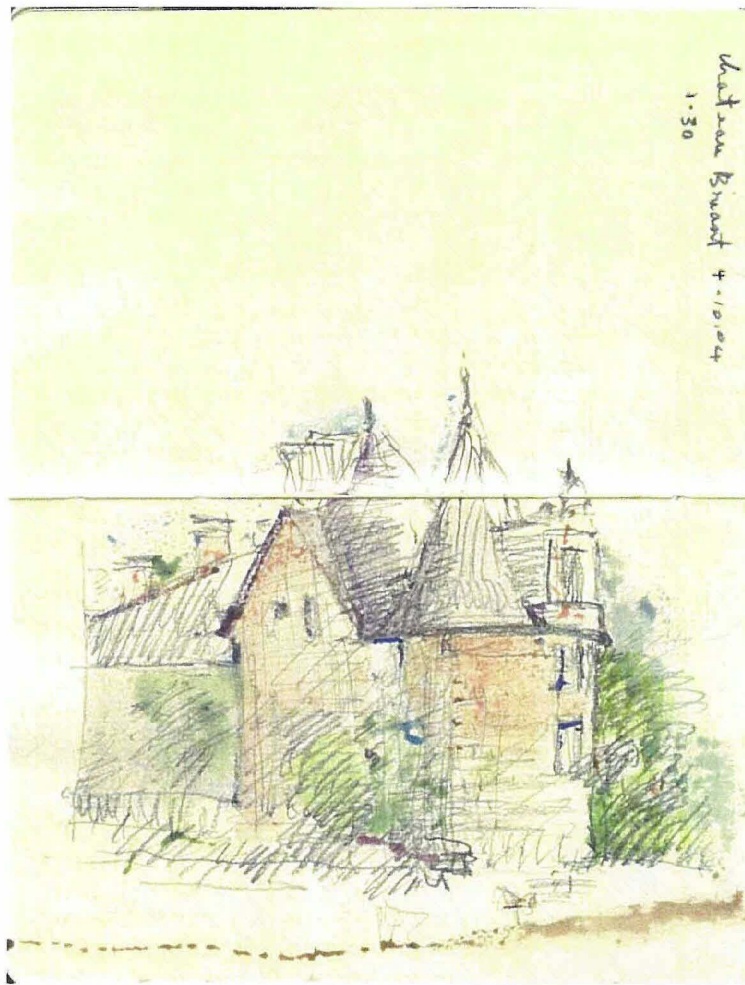
Bayeux Cathedral, 2006, 80 x 100 cm, oil on canvas



(left) *Mont Saint Michel*, 2004, pencil with watercolour on sketchbook pages, (each page) 9 x 14 cm
(right) *Mont Saint Michel*, 2007, etching, 18.8 x 29.8 cm



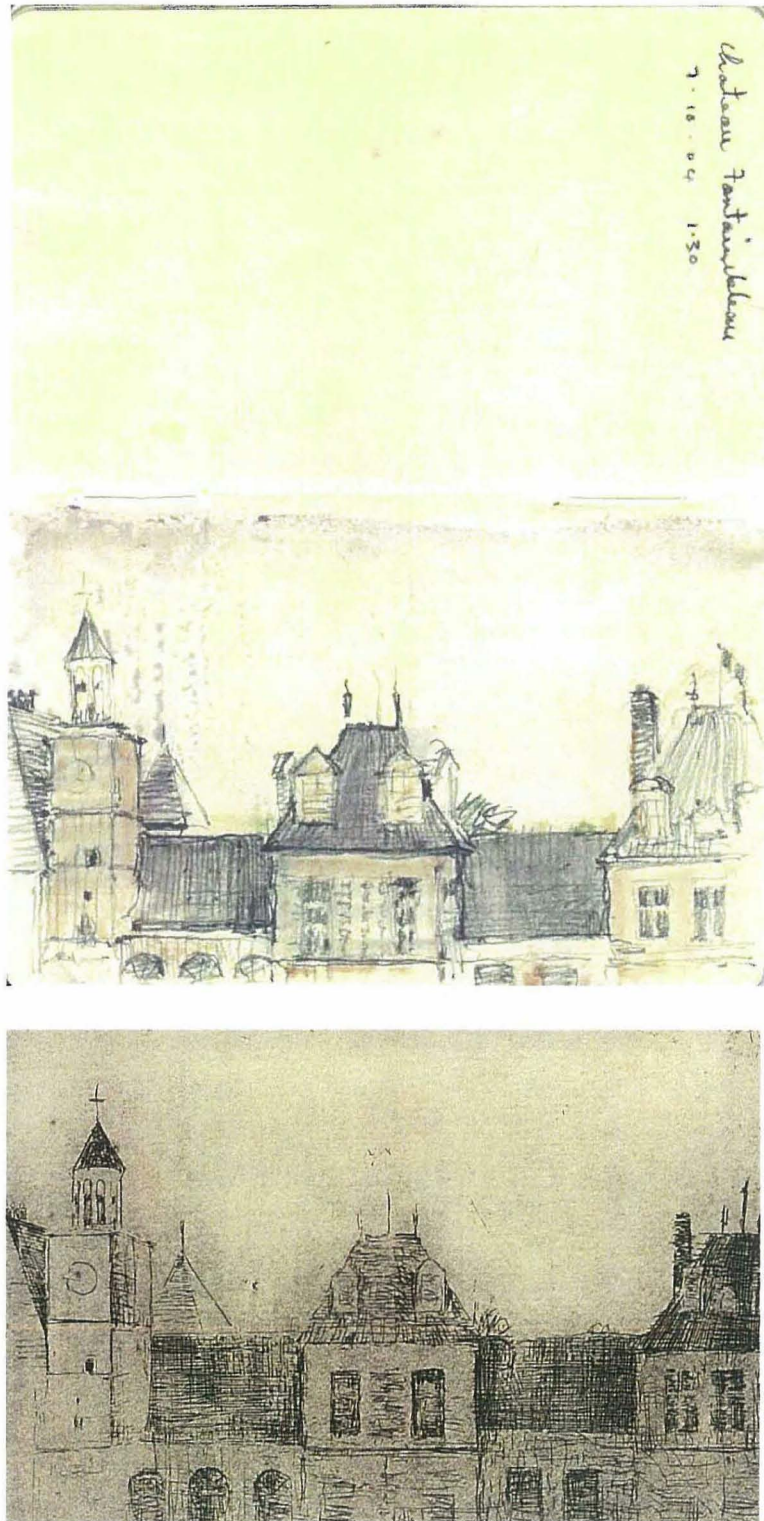
Mont Saint Michel, 2007, 80 x 100 cm, oil on canvas



(above) *Chateau Briant*, 2004, pencil with watercolour on sketchbook pages, (each page) 9 x 14 cm
(below) *Chateau Briant*, 2007, etching, 18.8 x 29.8 cm



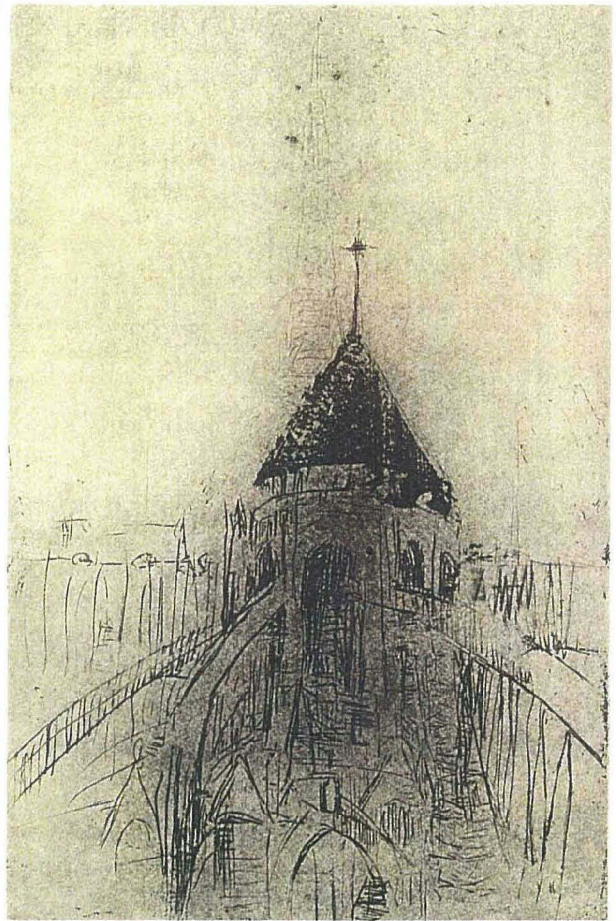
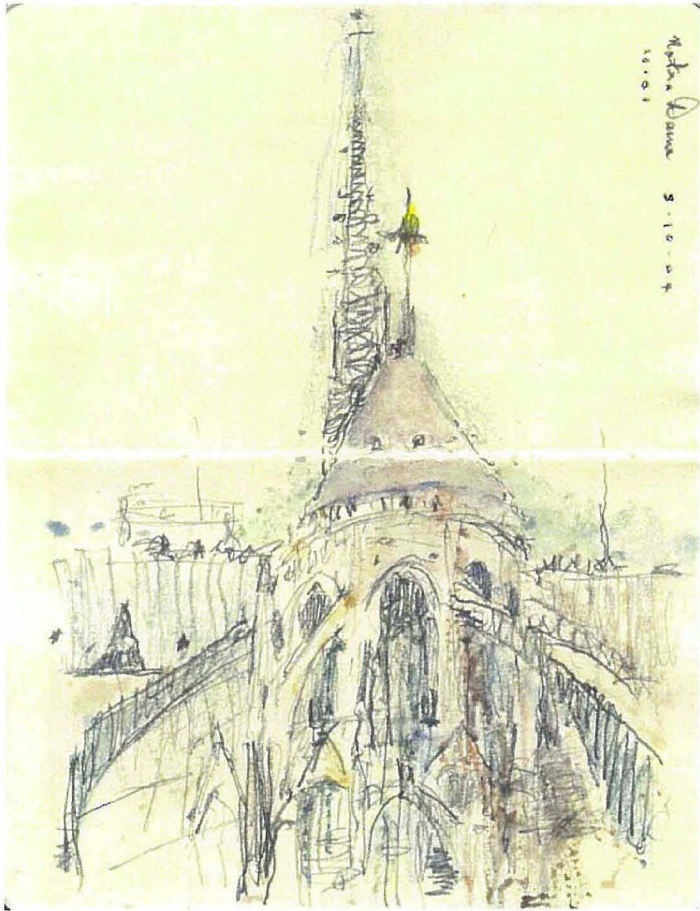
Chateau Briant, 2007, 80 x 100 cm, oil on canvas



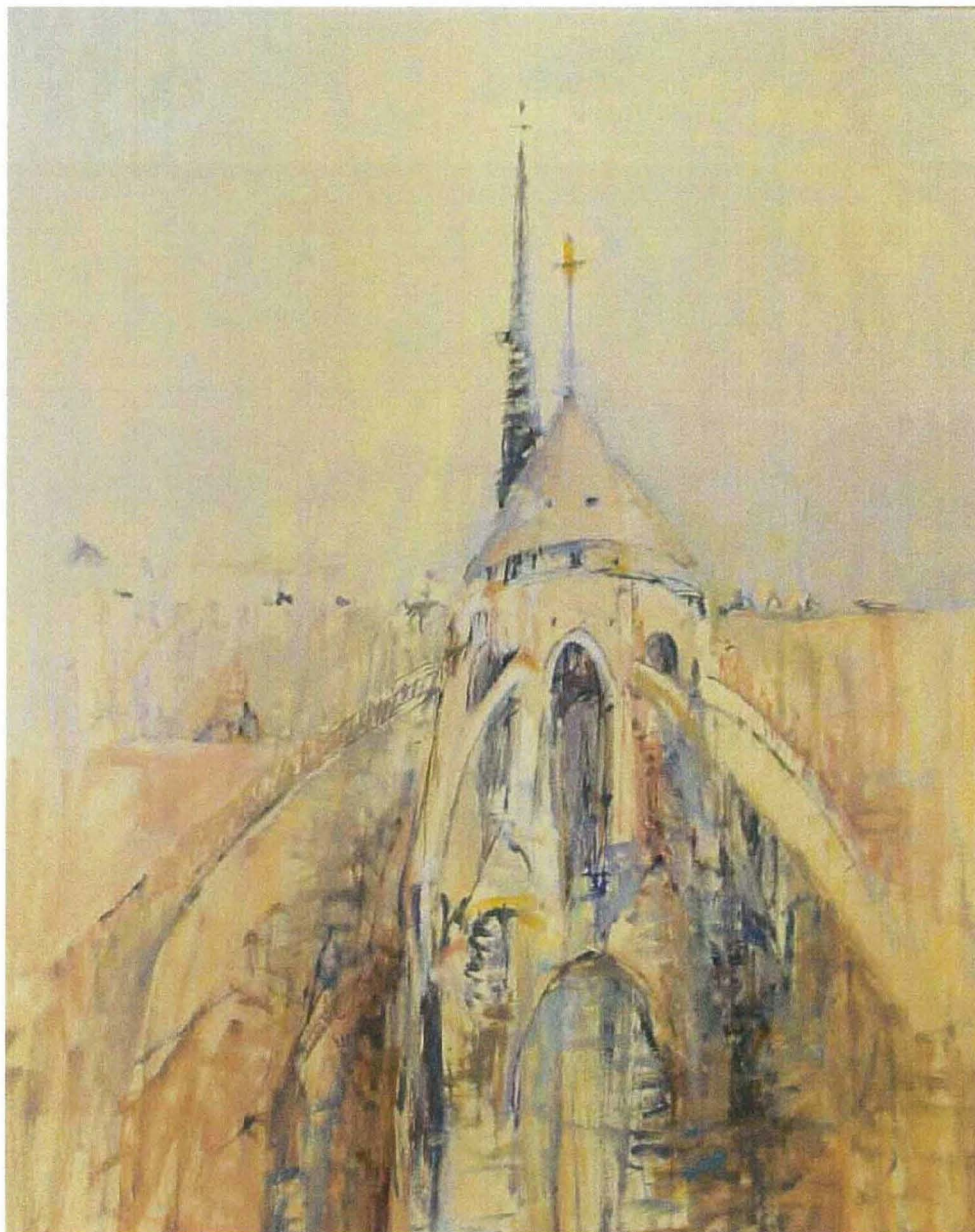
(above) *Chateau Fontainebleau*, 2004, pencil with watercolour on sketchbook pages, (each page) 9 x 14 cm
(below) *Chateau Fontainebleau*, 2007, etching, 18.8 x 29.8 cm



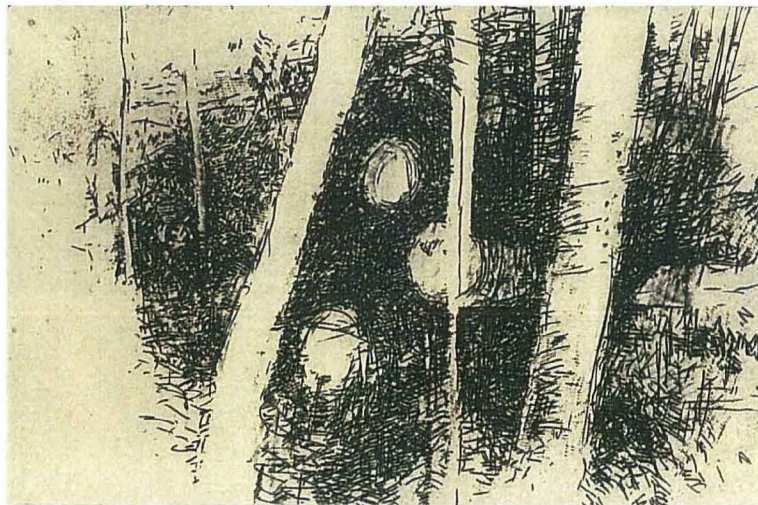
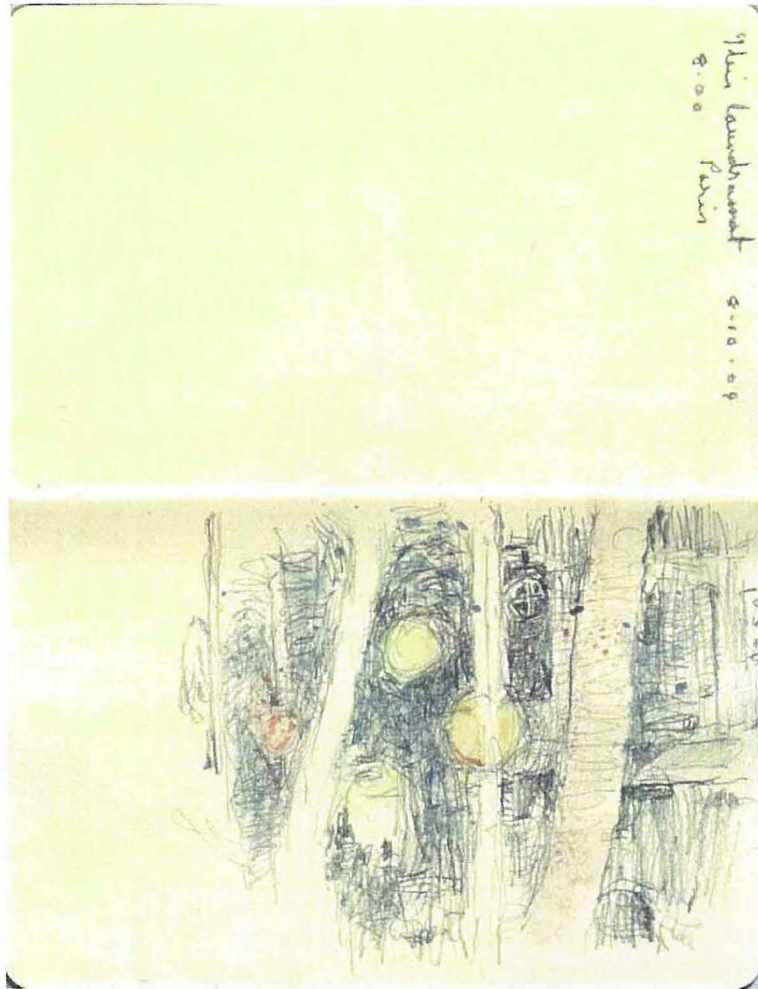
Chateau Fontainebleau. 2006, 80 x 100 cm, oil on canvas



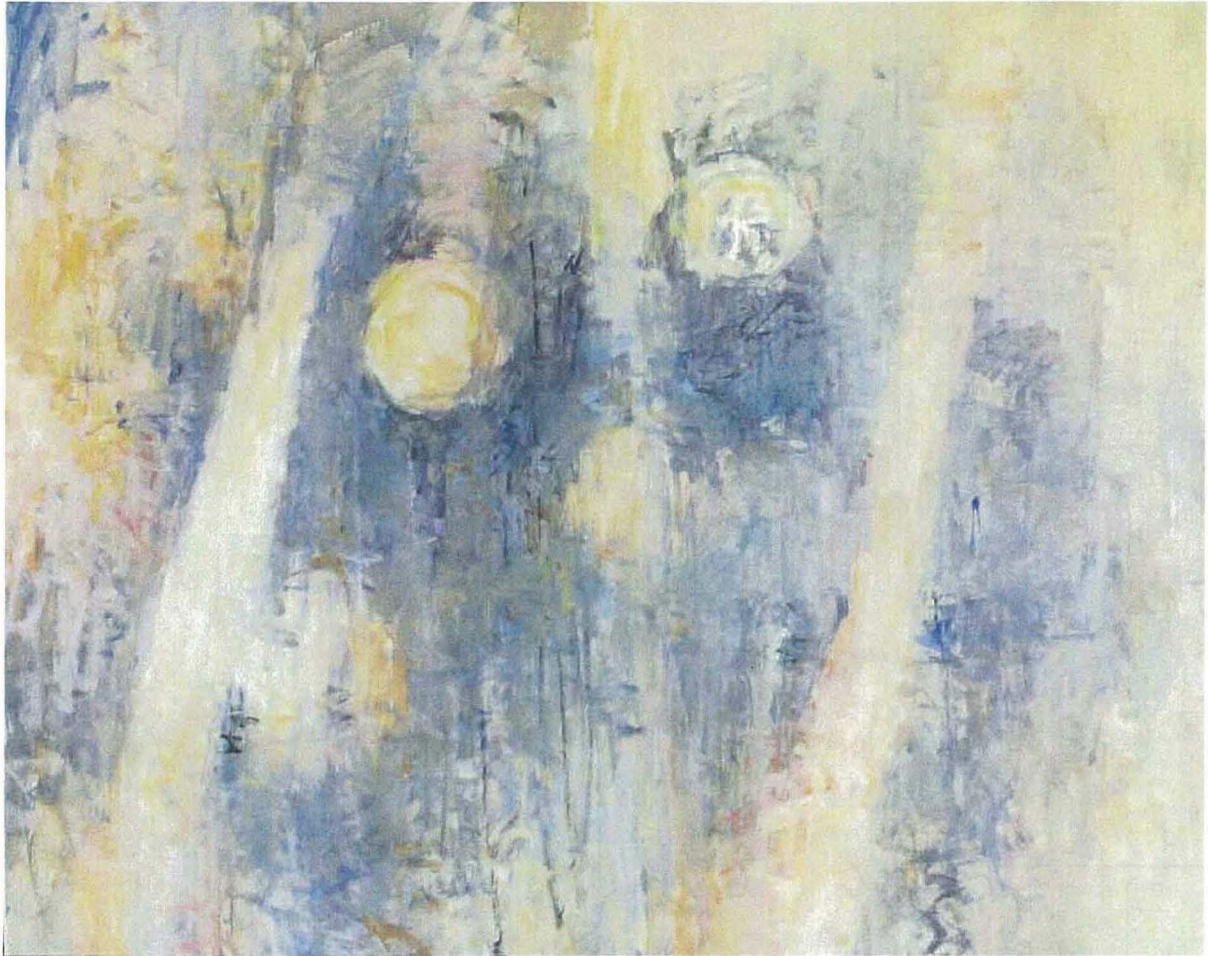
(left) *Notre Dame*, 2004, pencil with watercolour on sketchbook pages, (each page) 9 x 14 cm
(right) *Notre Dame*, 2007, etching, 18.8 x 29.8 cm



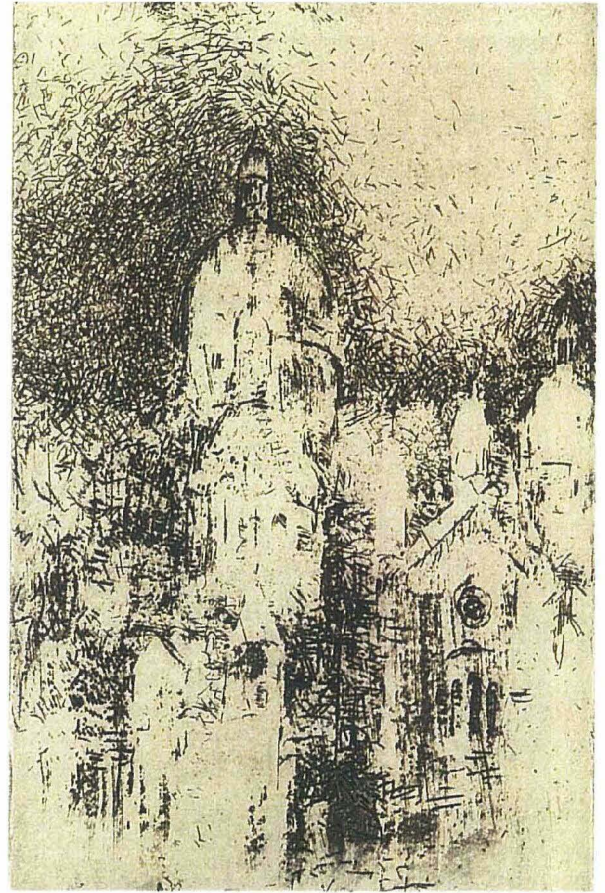
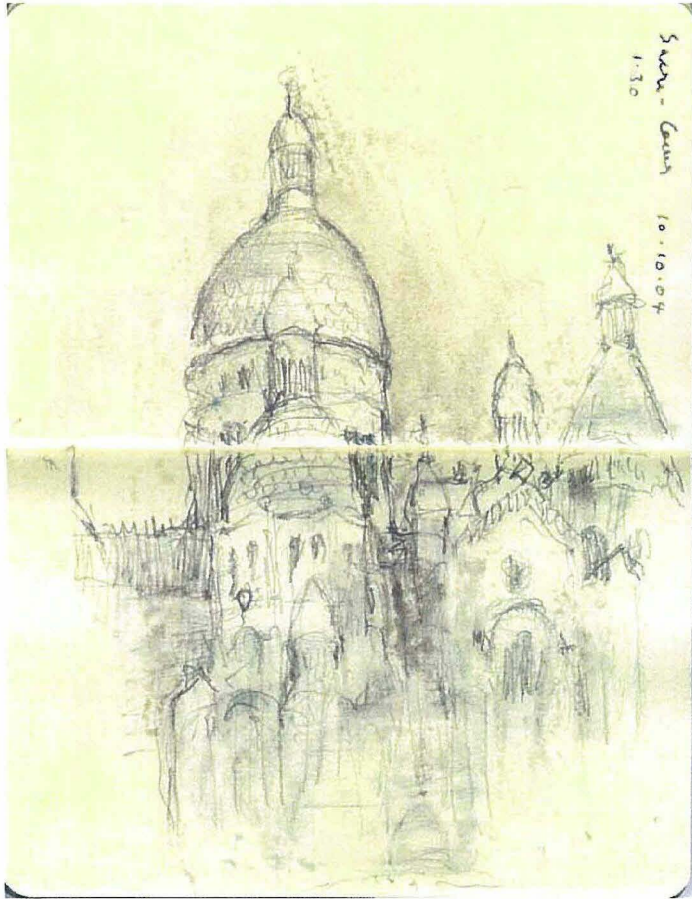
Notre Dame, 2006, 80 x 100 cm, oil on canvas



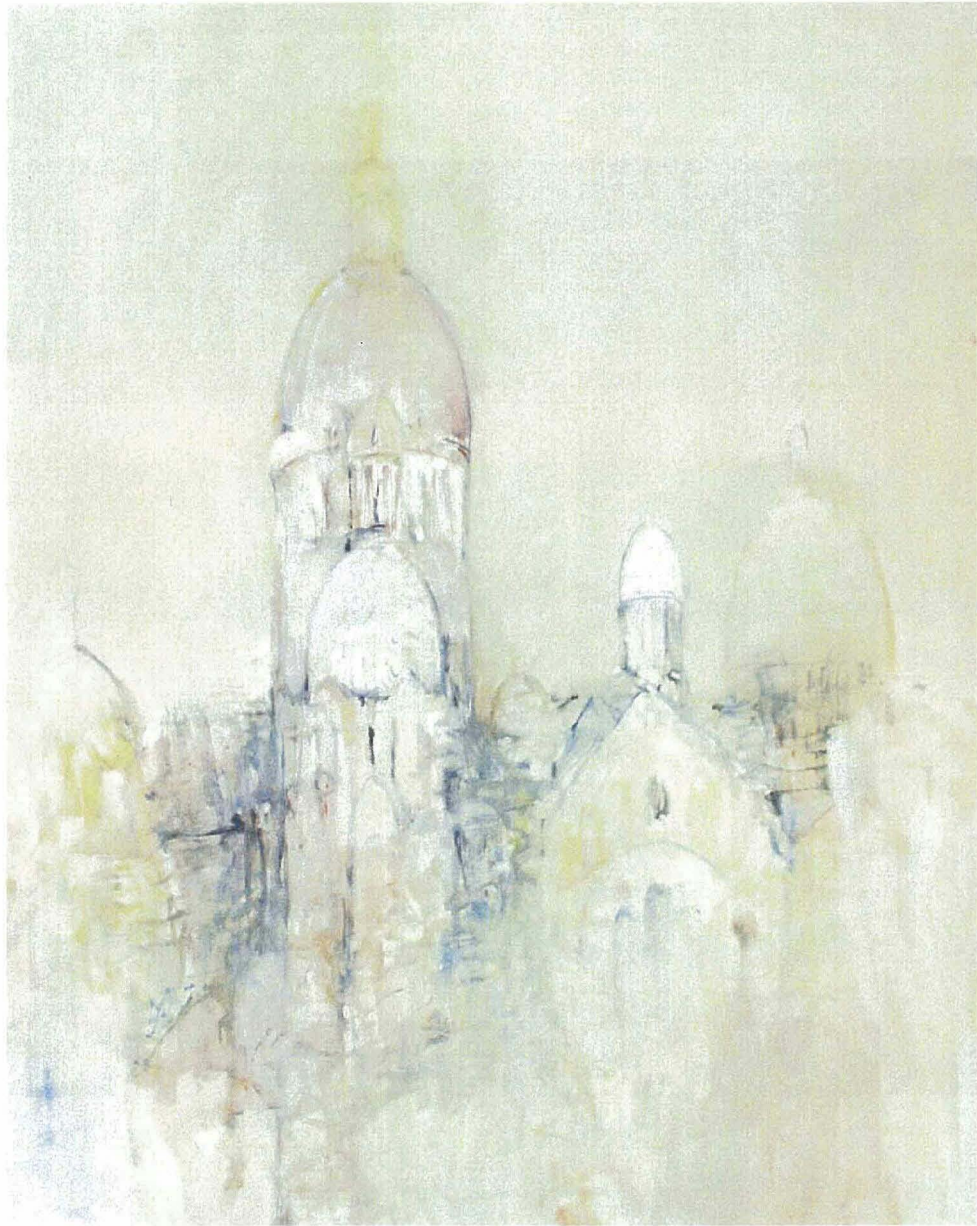
(above) *Ibis Laundromat*, 8.00pm, Paris, 2004, pencil with watercolour on sketchbook pages, (each page) 9 x 14 cm
(below) *Ibis Laundromat*, 8.00pm, Paris, 2007, etching, 18.8 x 29.8 cm



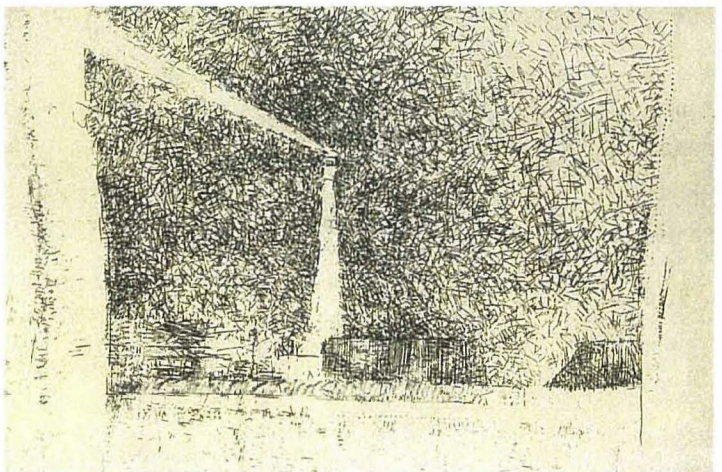
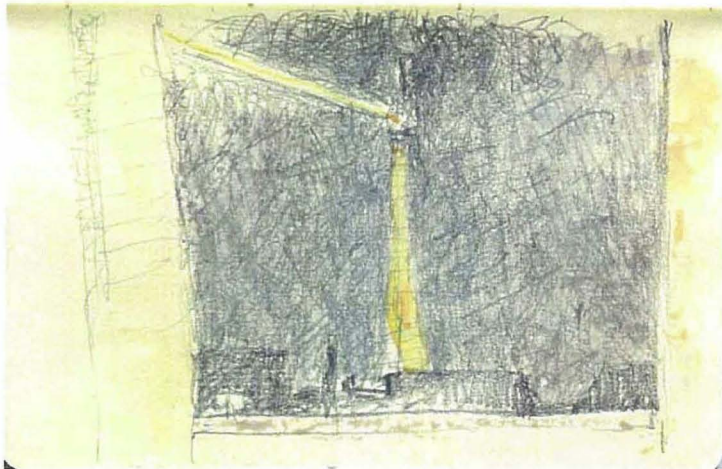
Ibis Laundromat, 8.00pm, Paris, 2007, 80 x 100 cm, oil on canvas



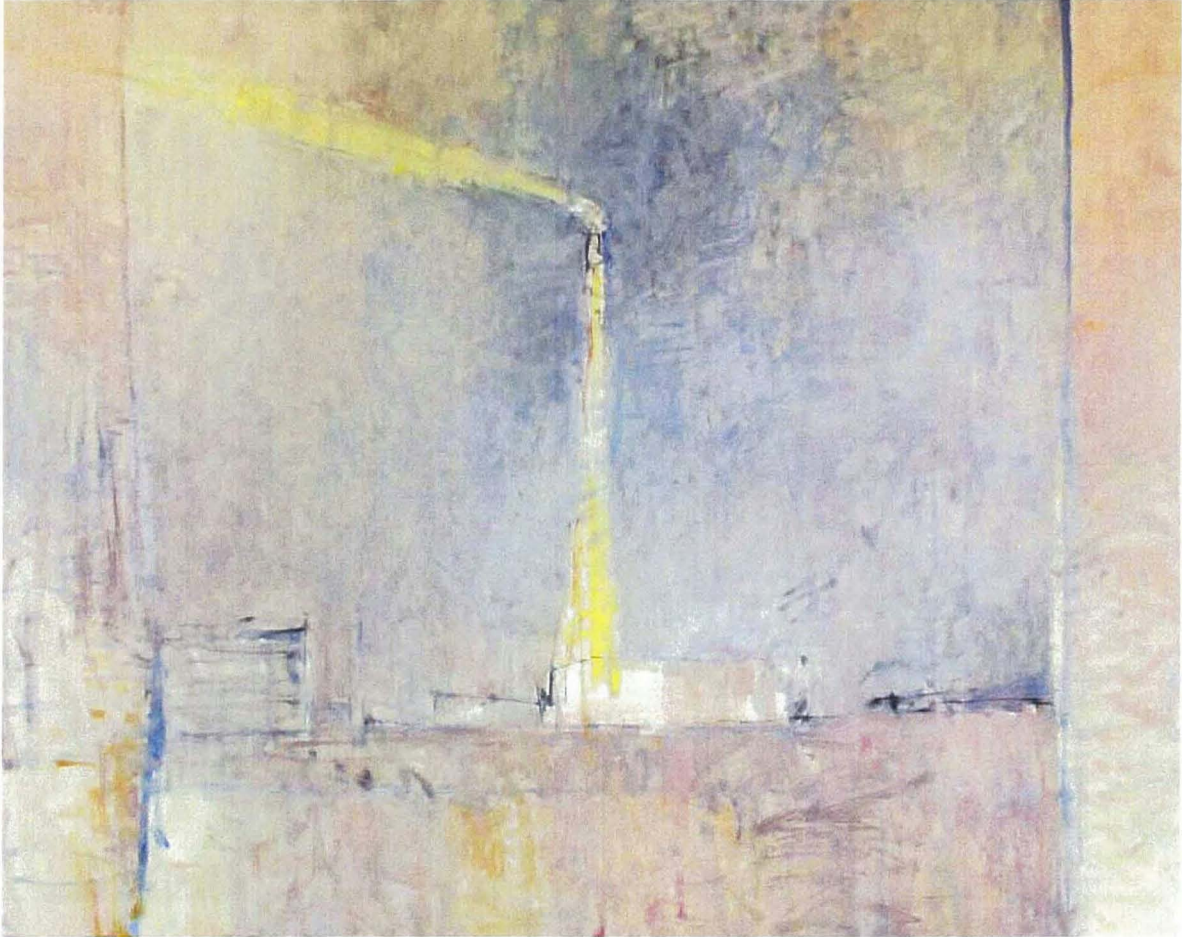
(above) *Sacre Coeur*, 2004, pencil with watercolour on sketchbook pages, (each page) 9 x 14 cm
(below) *Sacre Coeur*, 2007, etching, 18.8 x 29.8 cm



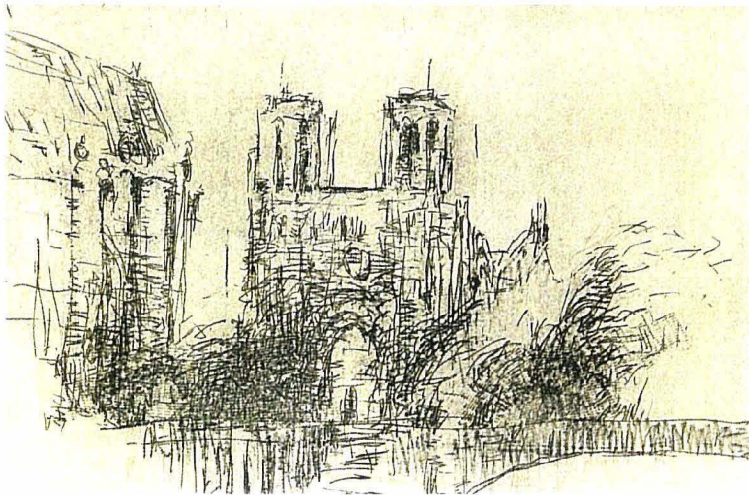
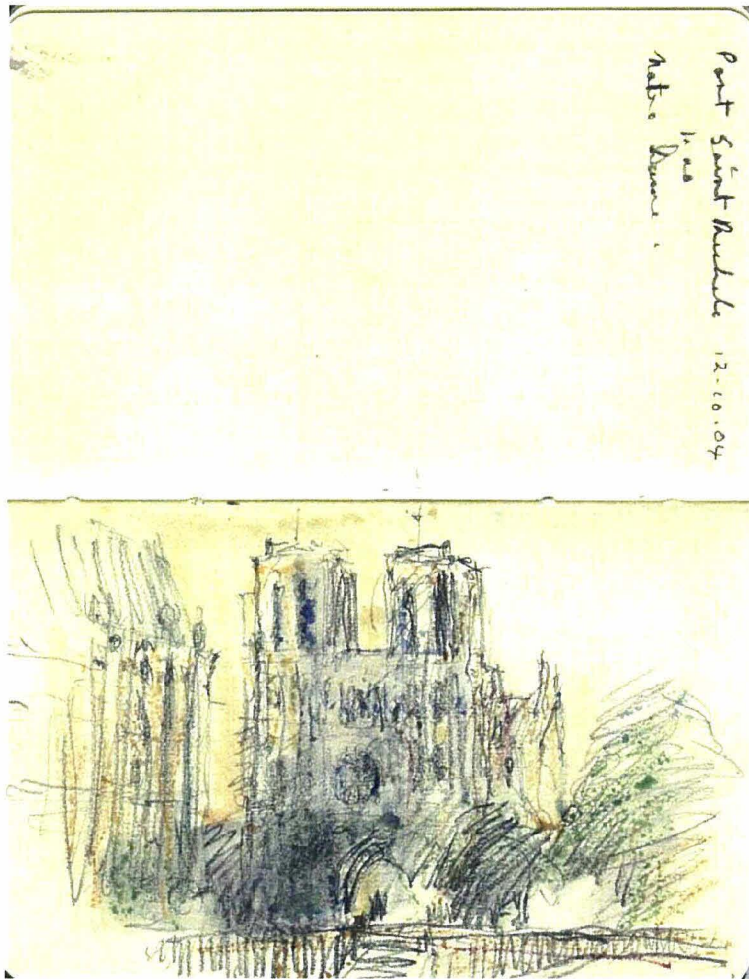
Sacre Coeur, 2007. 80 x 100 cm, oil on canvas



(above) *From Cartiglione Hotel, Paris, 2004*, pencil with watercolour on sketchbook pages, (each page) 9 x 14 cm
(below) *From Cartiglione Hotel, Paris, 2007*, etching, 18.8 x 29.8 cm



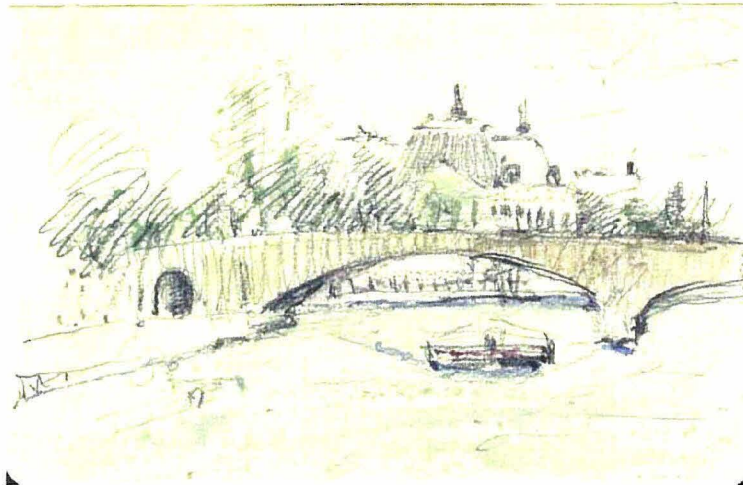
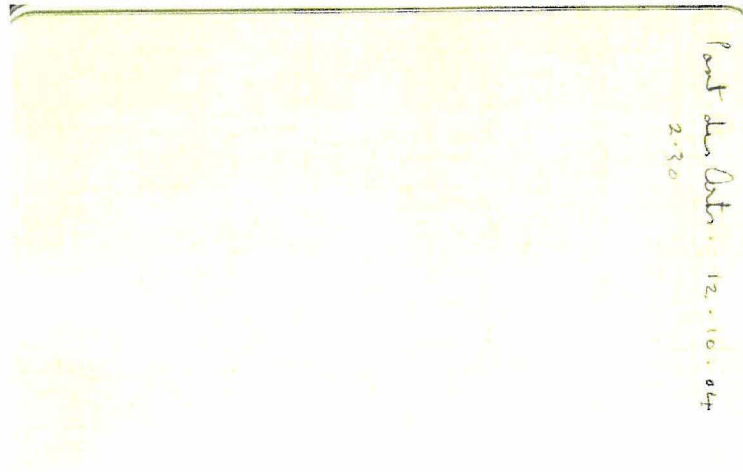
From Cartiglione Hotel, Paris, 2007, 80 x 100 cm, oil on canvas



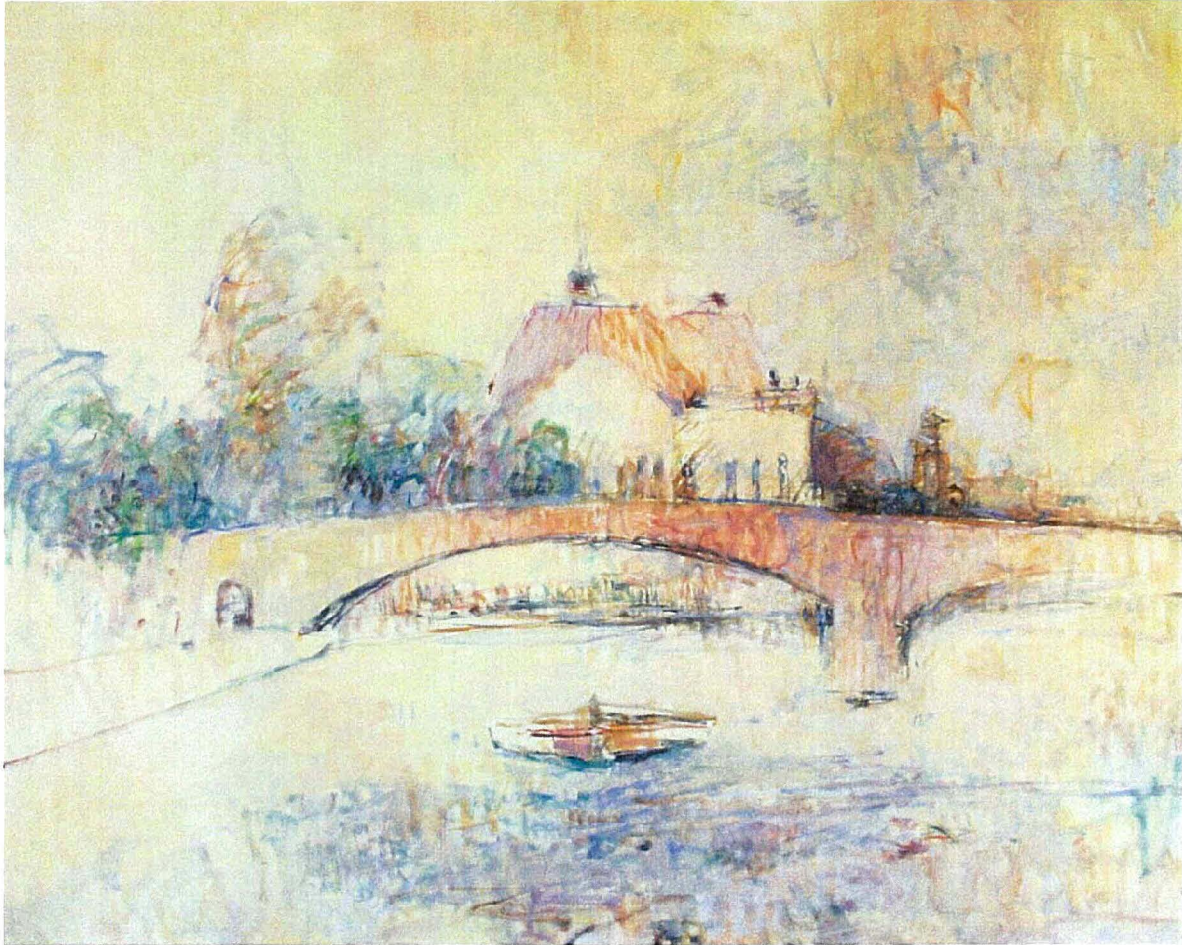
(above) *Pont Saint Michele*, 2004, pencil and watercolour on sketchbook page, (each page) 9 x 14 cm
(below) *Pont Saint Michele*, 2007, etching, 18.8 x 29.8 cm



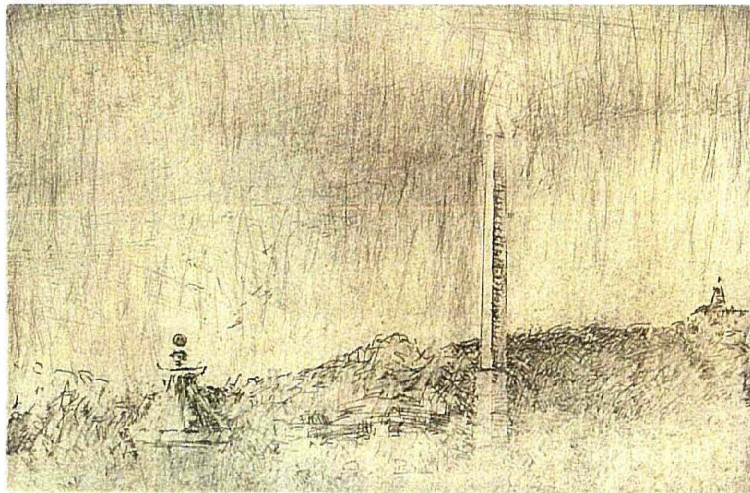
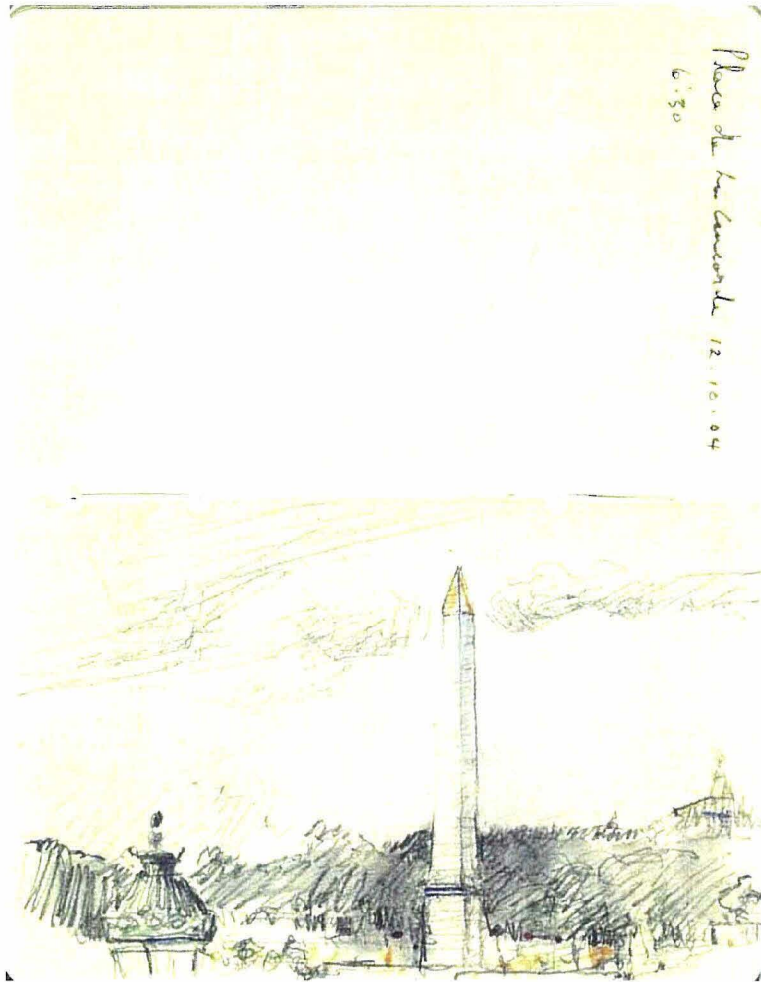
Pont Saint Michele, 2007, 80 x 100 cm, oil on canvas



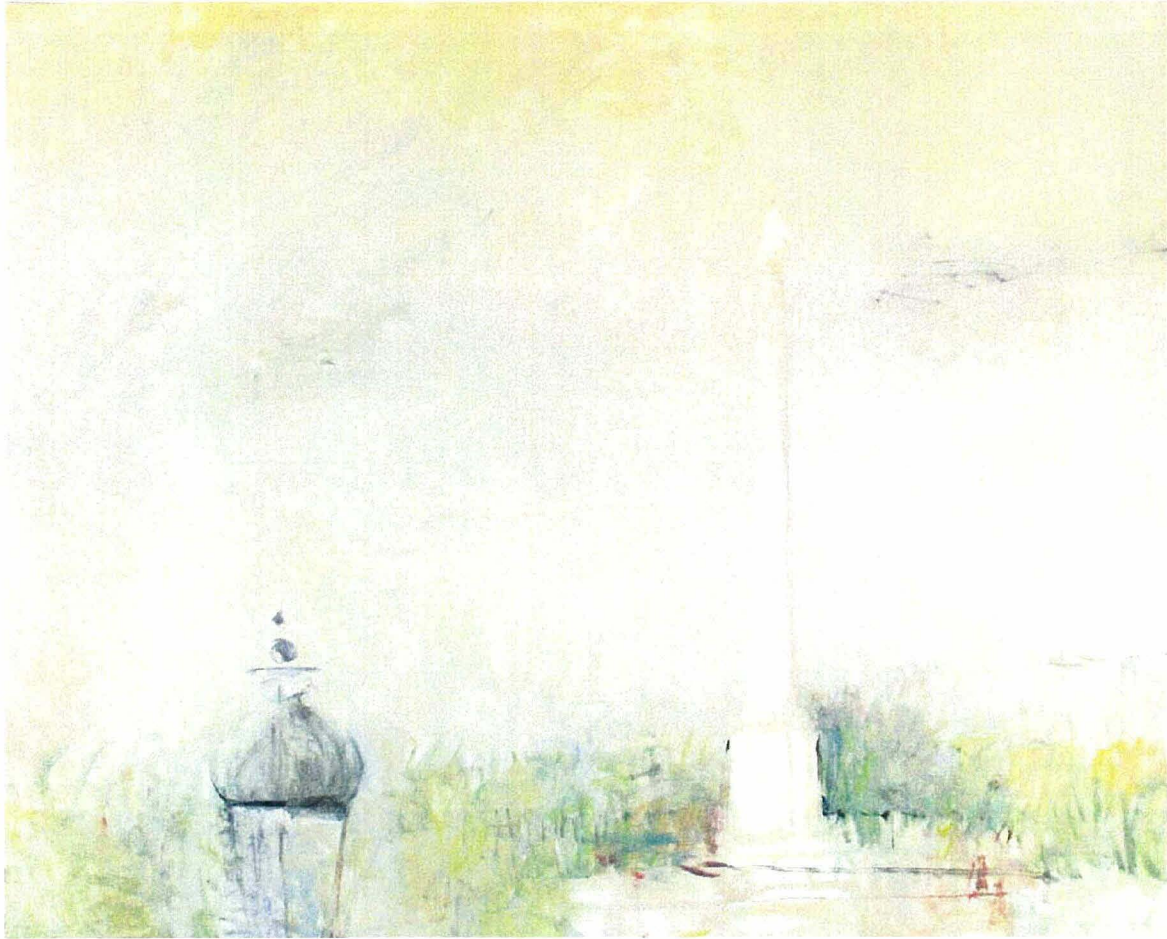
(above) *Pont des Arts*, 2004. pencil and watercolour on sketchbook page, (each page) 9 x 14 cm
(below) *Pont des Arts*, 2007. etching, 18.8 x 29.8 cm



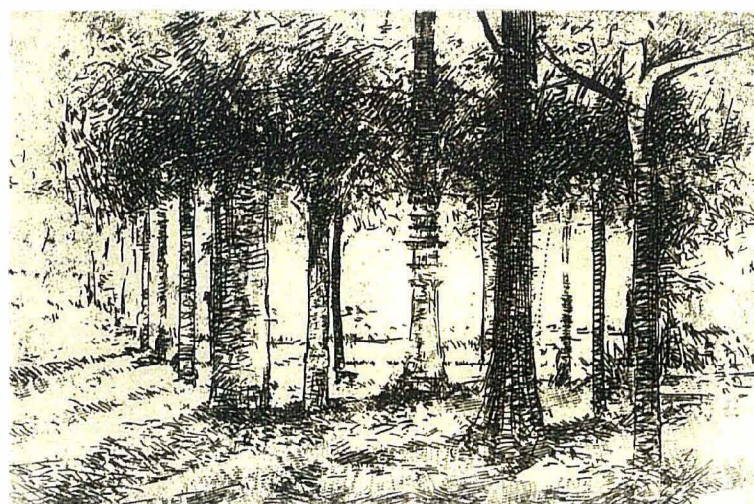
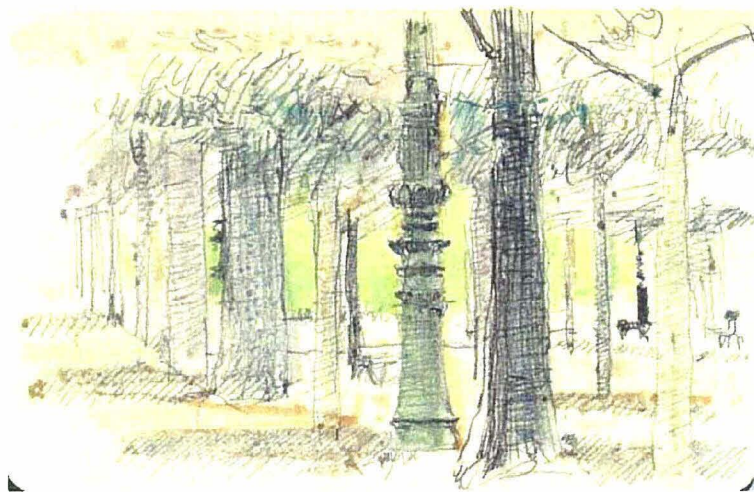
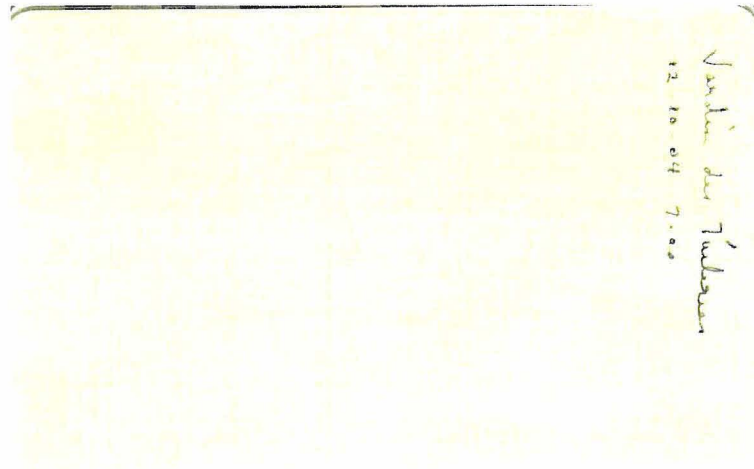
Pont des Arts, 2007, 80 x 100 cm, oil on canvas



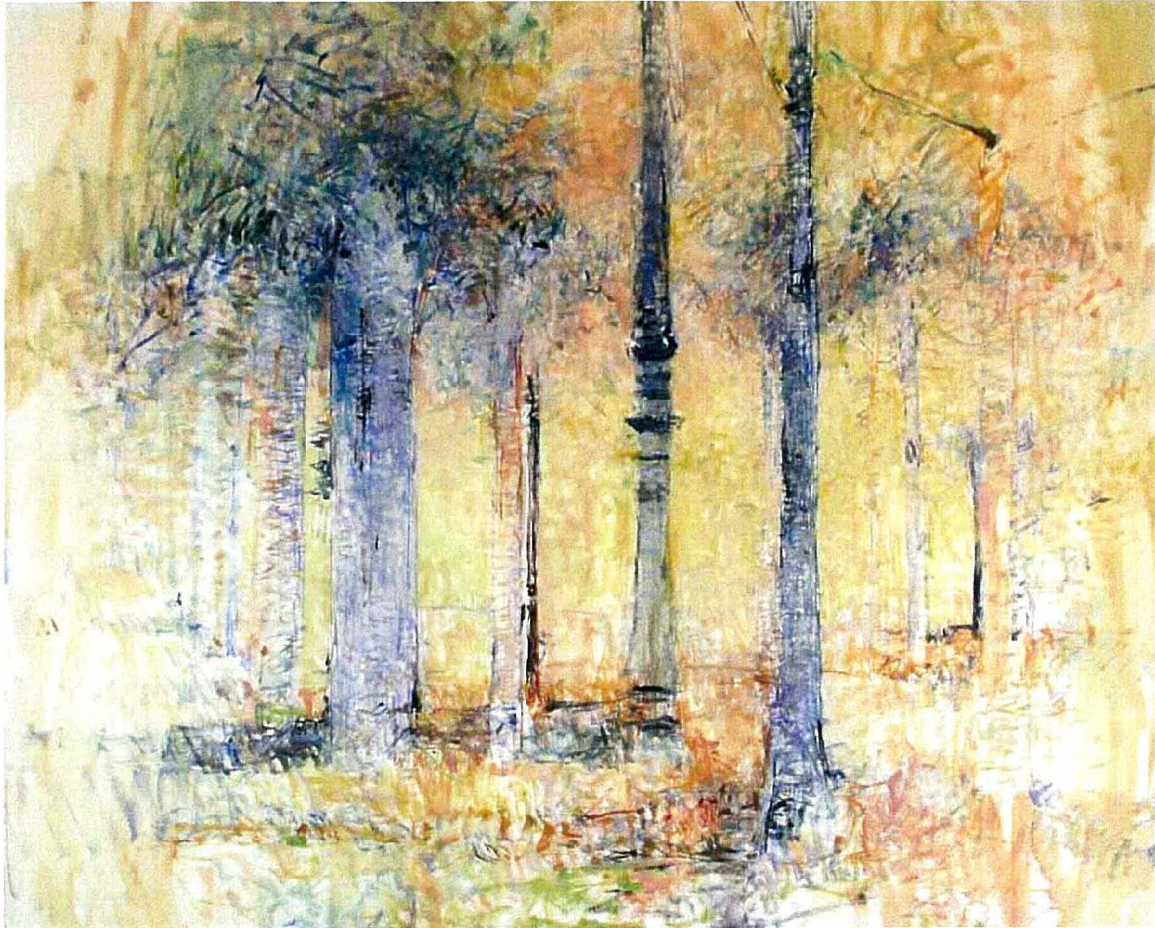
(above) *Place de La Concorde*, 2004. pencil and watercolour on sketchbook page, (each page) 9 x 14 cm
(below) *Place de La Concorde*, 2007, etching, 18.8 x 29.8 cm



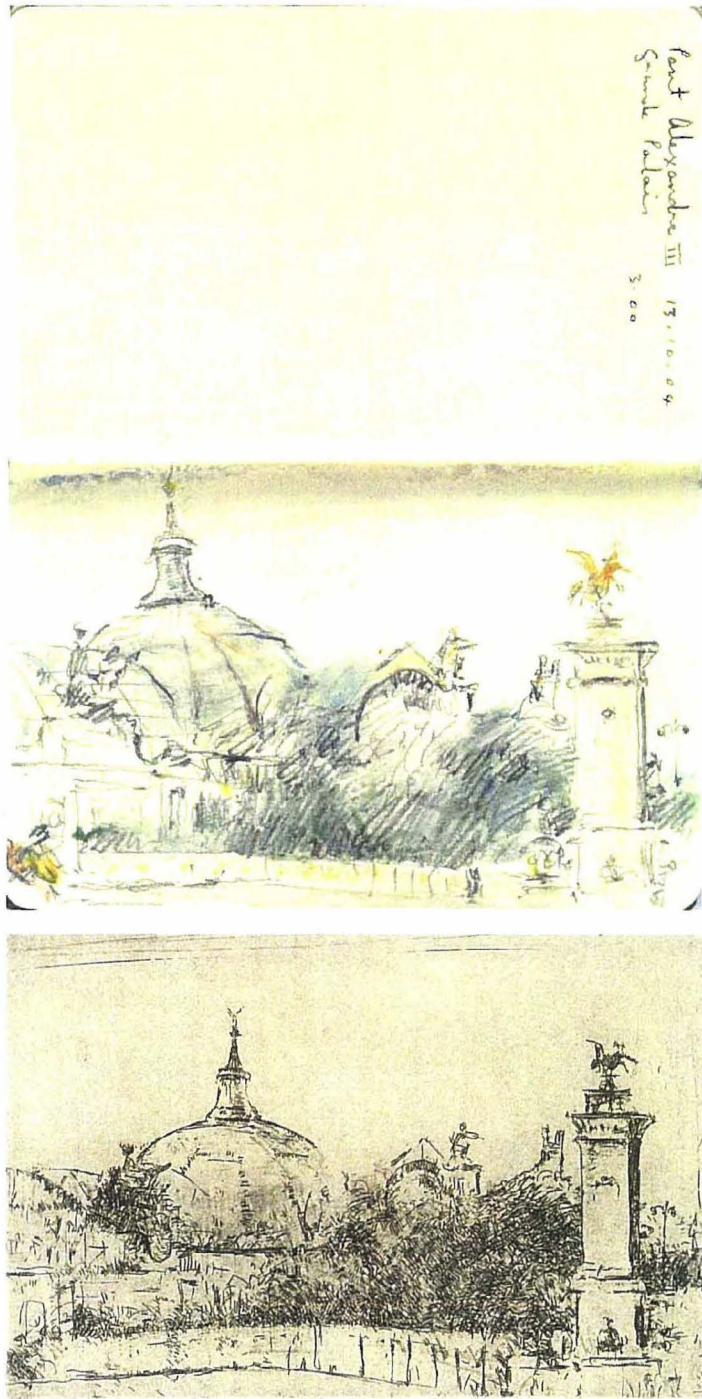
Place de La Concorde, 2007, 80 x 100 cm, oil on canvas



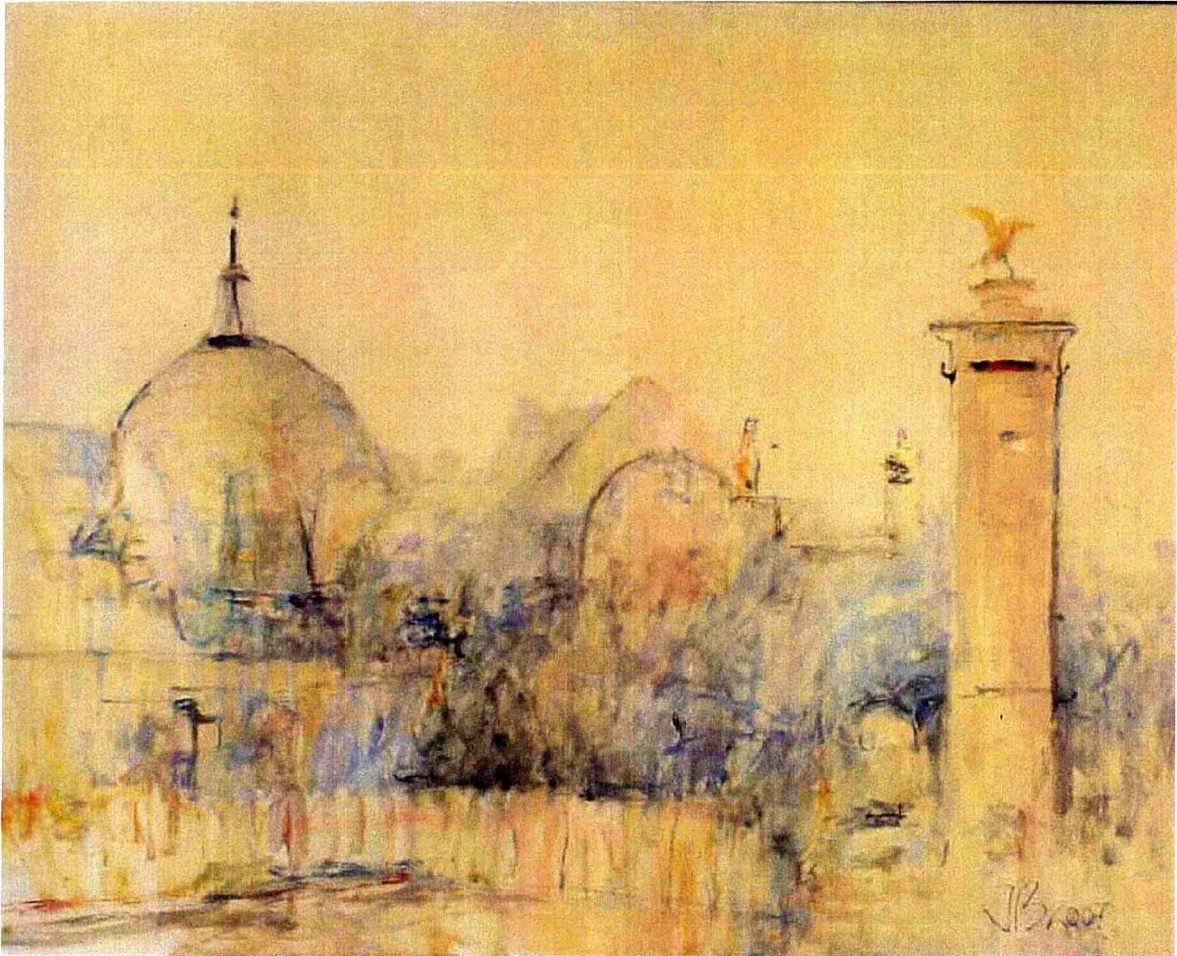
(above) *Jardin des Tuileries*, 2004, pencil and watercolour on sketchbook page, (each page) 9 x 14 cm
(below) *Jardin des Tuileries*, 2007, etching, 18.8 x 29.8 cm



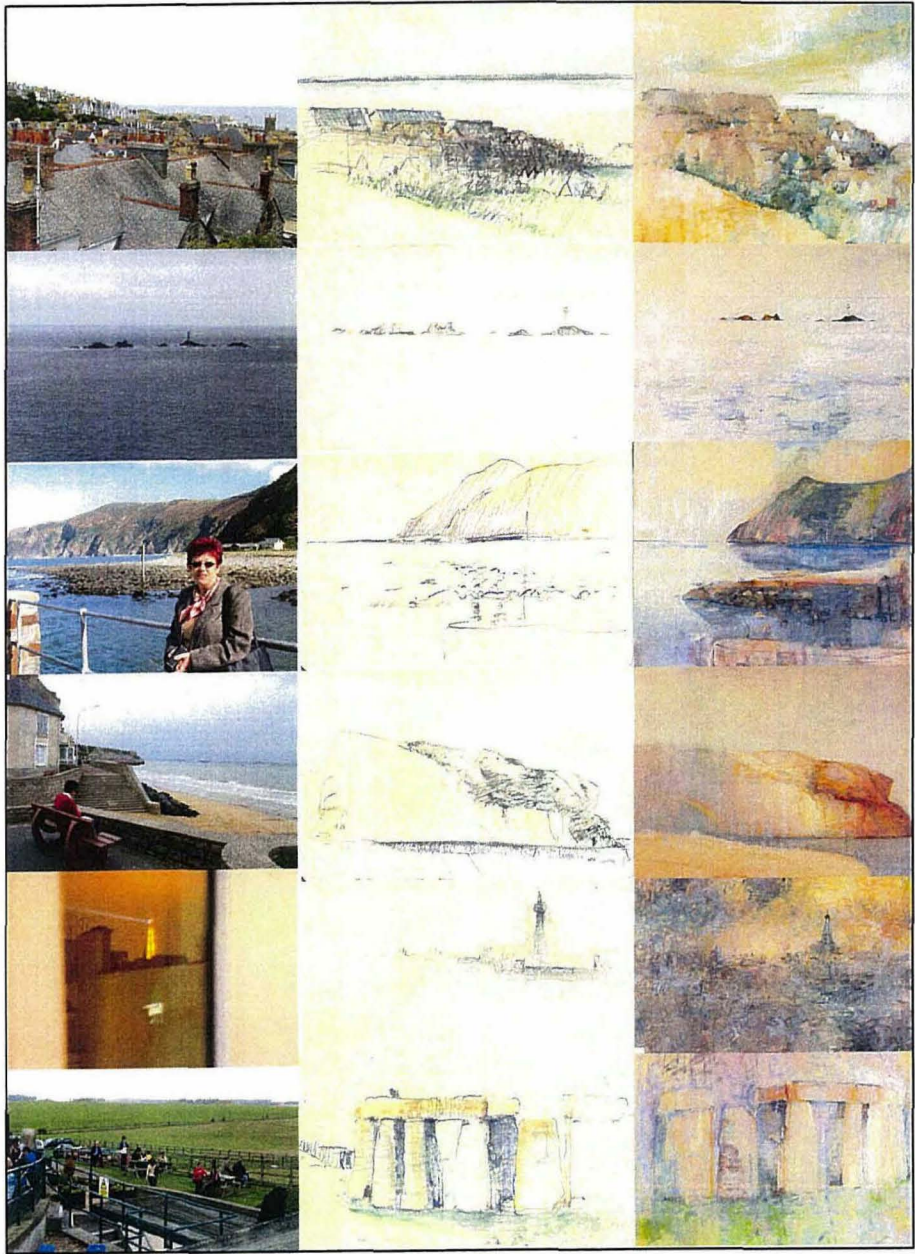
Jardin des Tuileries, 2007, 80 x 100 cm, oil on canvas



(above) *Pont Alexandre 111*, 2004, pencil and watercolour on sketchbook page, (each page) 9 x 14 cm
(below) *Pont Alexandre 111*, 2007, etching, 18.8 x 29.8 cm



Pont Alexandre 111, 2007, 80 x 100 cm, oil on canvas



This exhibition is supported by JCU
and curated by Anne Carter

